

January 4, 2017

SHELBY COUNTY BOARD MEETING AGENDA
January 11, 2017 – 9:00 A. M. in Courtroom B

1. Call to Order- Prayer - Pledge of Allegiance
2. Roll Call
3. Approval of Minutes
4. Shelby County Economic Development Director Anna Kiley and Bruce Steinke – Update regarding Shelby County CEO(Creating Entrepreneurial Opportunities) Program
5. Architect Bill Utz – Information regarding the proposed Shelby County Courthouse Exterior Renovation Project
6. Zoning Administrator Jared Rowcliffe – Resolution for Special Exception for Effingham Equity for Fertilizer Storage
7. Susan Love, CIPT Transportation Director – Introduction and Update on Rural Transportation Activities
8. Chairman David Cruitt - County Engineer Contract Renewal
9. Chairman David Cruitt – Resolution in Support of Improving and Expanding High Speed Broadband Internet in all areas of Shelby County
10. County Highway Engineer Alan Spesard – Highway Engineer’s Report/Approval for the following: Resolution to Award County Maintenance Rock Contract; Resolution to Award Culvert Contract
11. Committee Reports
12. Chairman Updates
13. Chairman Appointments
14. Correspondence
15. Public Body Comment
16. Adjournment

Please silence cell phones during the Board meeting.

Prayer today is given by Board member Robert Jordan

SHELBY COUNTY BOARD MEETING

January 11, 2017 – 9:00 A.M.

The Shelby County Board met on Wednesday, January 11, 2017 at 9:00 A.M. at the Courthouse in Shelbyville, Illinois.

Chairman Cruitt called the meeting to order. Board member Robert Jordan gave the prayer and all present recited the Pledge of Allegiance.

County Clerk Jessica Fox called the roll.

Minutes for the December 14, 2016 board meeting were presented for approval. Mulholland made motion to approve the minutes as presented. Gergen seconded said motion, which passed by voice vote (21 yes, 0 no).

Anna Kiley, Shelby County Economic Development Director, addressed the Board to enlighten them on the CEO (Creating Entrepreneurial Opportunities) Program that was recently started in Shelby County. This program is a life skills program open to High School Seniors and is worth 2 credits. It is open to 20 students a year. The program has also been offered to juniors, but with the large number of applications for the program, first chosen will be seniors. The students work with local businesses to develop 21st century skills. They also learn to start income producing businesses as well as become better communicators and more confident students. The program is funded by local investors and members of the community. Shelby County needs 50 businesses to pledge in order to get the program started, so far 12 businesses have pledged. Kiley asked the Board to consider pledging \$1,000 a year for 3 years. Bruce Steinke of Shelby Realty spoke about the program and the students he has worked with. He encouraged the board to pledge and any of those business owners to become involved with the CEO Program.

Architect Bill Utz from Utz and Associates has been working with the Public Buildings committee regarding Courthouse roof and window repair. Utz states his plan would be a 50 year fix and provided a cost estimate of 3.5 million dollars. Utz discussed the various types of shingle material that could be used to replace the roof. Discussion was held. The budget committee will be speaking with a bonding company on January 19th to discuss ways to pay for the much needed repairs to the roof and windows.

Zoning Administrator Jared Rowcliffe requested approval from the Board for a Special Exception for Effingham Equity for a new anhydrous ammonia storage facility located in Richland Township. This would change the Zoning from AG to AG with Special Exception. This facility would be located farther away from populated areas and there have been no objections. The Planning Commission met December 15th and approved the Special Exception request. Employees from Effingham Equity were in attendance and answered questions from the Board.

Wetherell made motion to approve the Special Exception for Effingham Equity. Strohl seconded said motion, which passed by voice vote (21 yes, 0 no). (Zoning Resolution attached to these minutes).

Susan Love, the newly hired Transportation Director for CIPT, introduced herself to the Board. Love stated she hopes to continue to increase ridership and transportation opportunities.

Chairman Cruitt updated the board that it was time to reappoint the County Highway Engineer. IDOT has requested the current Engineer Alan Spesard be reappointed. Cruitt also stated in addition to the Resolution from IDOT requesting Spesard's reappointment, there was also a Resolution that would require approval for the salary increase (\$105,400) associated with Spesard's new 6 year contract.

Mulholland made motion to approve the IDOT Resolution requesting Alan Spesard be reappointed as County Highway Engineer. Wetherell seconded said motion, which passed by voice vote (21 yes, 0 no). (Resolution attached to these minutes).

Cannon made motion to approve the Resolution to grant Spesard a 2% pay increase with this new 6 year contract. Mulholland seconded said motion, which passed by voice vote (21 yes, 0 no). (Resolution attached to these minutes).

Next Cruitt presented a Resolution in Support of Improving and Expanding High-Speed Internet in Shelby County. Williams made motion to approve this Resolution. Amling seconded said motion, which passed by voice vote (21 yes, 0 no). (Resolution attached to these minutes).

At this time, Chairman Cruitt called for the County Highway Engineer's report.

Alan Spesard, County Highway Engineer, thanked the Board for his reappointment as County Highway Engineer and presented the Highway Engineer's Report and requested approval from the Board for the annual Culvert and Rock Resolutions.

Woodall made motion to approve the Resolution for culverts for the County, Townships and Villages that requested them for 2017. Wetherell seconded said motion, which passed by voice vote (21 yes, 0 no). (Resolution attached to these minutes).

Hayden made motion to approve the County's Rock Resolution for 2017. This Resolution included 11 different types of rock to be used by the Highway Department throughout the year. Drnjevic seconded said motion, which passed by voice vote (21 yes, 0 no). (Resolution attached to these minutes).

Spesard reported the annual Cold Mix bid letting for the County and Townships will be held on February 3rd. A bid letting for a Railroad Crossing Approach in Rural Township will be held on February 3rd. This project is 100% funded by the State of Illinois. Holland and Oconee Townships have requested a non-MFT bid letting for the hauling and stockpiling of rock. This will also be held on February 3rd. The bid letting for the Henton County

Shelby County Board Meeting
January 11, 2017

Highway Bridge will be held in Springfield on January 20th. The tire collection for local agencies that was recently held was a success.

Copies of the Highway Department's Annual Report were distributed to the Board members prior to the meeting and contain an overview of the projects completed during the past year, along with photos of jobs done, responsibilities of the Road and Bridge Committee, engineering and inspection services, township projects completed, and ways the Highway Department assisted other County agencies throughout the year. Highlighting the Highway Department's Annual Report, Spesard called the Board's attention to page 2, which summarized the 2016 major achievements that included 6 capital improvement projects and involved \$3,199,309 in Federal, State and Local Funding. Spesard also stated the Highway Department paid off all of their loans and is currently out of debt.

Chairman Cruitt called for committee reports. (Committee reports are attached to these minutes). Reports were given and items presented for follow-up or for public awareness are as follows:

Farm Committee Chair Jordan stated that the Farm Committee will meet with the County Farm tenant soon to review the Farm Lease.

Finance Committee Chair Cannon informed the Board the next Budget meeting would be held on Thursday, January 19th.

Legislative Committee Chair Amling stated the committee would be meeting to review minutes from closed meetings on January 17th.

Chairman Cruitt requested the following appointments:

Brenda Horsman – Mental Health “708” Board. Motion by Cannon, second by Wetherell, passed by voice vote (20 yes, 0 no, Bennett abstain).


Penny Standerfer – Mental Health “708” Board. Motion by Drnjevic, second by Mulholland, passed by voice vote (20 yes, 0 no, Bennett abstain).

Dennis Drnjevic – Mental Health “708” Board. Motion by Mulholland, second by Strohl, passed by voice vote (21yes, 0 no).

Under correspondence Cruitt referred the Board to the Cooperative Extension Webinar information that had been sent by Kathy Reiser, Cooperative Extension Director.

There was no public body comment and no further business to come before the Shelby County Board.

Cannon made motion to assess mileage and per diem for the January meetings, to pay the bills/payroll as approved by the committees and adjourn until the next regular meeting to be held on February 8, 2017. Bennett seconded said motion, which passed by voice vote (21 yes, 0 no) and the meeting was adjourned at 10:08 A.M.


Jessica Fox
Shelby County Clerk and Recorder

STATE OF ILLINOIS

ROLL CALL VOTES IN COUNTY BOARD

SHELBY COUNTY

Jan. 11, 2017

REGULAR MEETING

		ROLL CALL			QUESTIONS							
			1/11/2017	1/12/2017	ON MOTIONS TO		ON MOTIONS TO		ON MOTIONS TO		ON MOTIONS TO	
COUNTY BOARD MEMBERS		MILEAGE	A.M.	P.M.	AYE	NAY	AYE	NAY	AYE	NAY	AYE	NAY
217	AMLING, ROBERT	35	✓									
50	ARTHUR, JAMES		✓									
110	BARR, KENNETH	50	✓									
116	BEHL, ROBERT H.	42	✓									
117	BENNETT, BARBARA	40	✓									
45	CANNON, BRUCE	26	✓									
	COFFMAN, BRYON	48	✓									
99	CRUITT, DAVID		✓									
500	DRNJEVIC, DENNIS	22	✓									
214	DURBIN, JESSE	12	✓									
105	GERGENI, GARY	26	✓									
177	HAYDEN, RICHARD	44	✓									
193	JORDAN, ROBERT N.	31	✓									
64	KEARNEY, KAY		✓									
206	LENZ, LARRY	26	✓									
	METZGER, TERRY		✓									
7	MULHOLLAND, FRANK		✓									
274	SIMPSON, ROBERT	32	✓									
46	STROHL, DON	45	✓									
44	WETHERELL, DALE	46	✓									
10	WILLIAMS, LYNN		✓									
208	WOODALL, JOE	8	✓									

CEO Program Synopsis

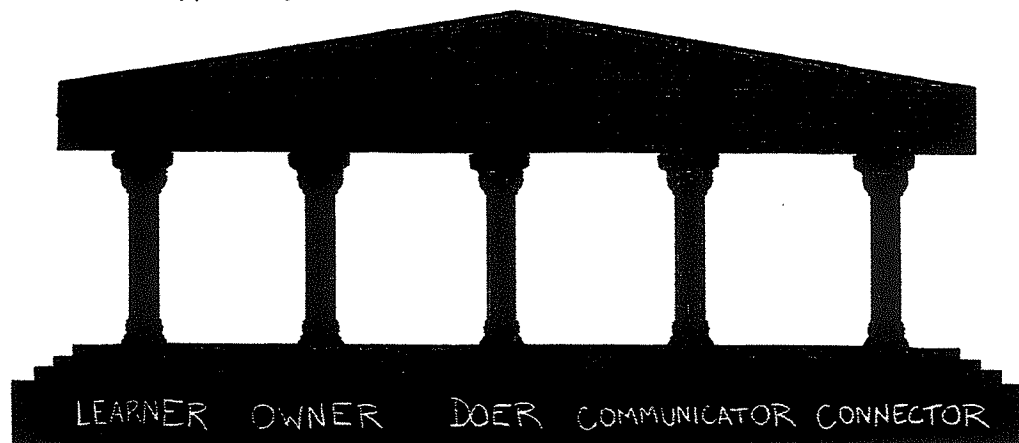
The Midland Institute for Entrepreneurship oversees the transformational class called CEO (Creating Entrepreneurial Opportunities).

CEO, which started in Effingham, Illinois, is a year-long accredited entrepreneurship course designed to utilize public/private partnerships that allow a community's best resource - its people - to connect with its best hope for a vibrant future: its young people.

Investors and other members of the business community provide funding, meeting space, business tours, and one-on-one mentoring. Students visit dozens of area businesses, learn from dozens of guest speakers, participate in a class business, write business plans, and start and operate their own real businesses. CEO is built completely around real life, real world experiences.

Every day, CEO students practice the 21st century skills of problem solving, teamwork, self-motivation, responsibility, higher-order thinking, communication and inquiry. CEO graduates are easy to recognize from the way they conduct themselves, ask engaged questions, and exhibit the obvious presence of personal accountability and integrity. CEO grads regularly receive preference in hiring, college admission, and scholarships.

CEO began its expansion in 2012, a result of interest from surrounding communities. The Midland Institute for Entrepreneurship was formed to oversee that growth, and in the fall of 2016 there will be more than 40 classes in five states. CEO has proven to be a powerful economic development tool, helping young people see their hometowns as streets of opportunity, not dead ends.



CEO is built around five pillars that we believe build communities.

Mission

To be learners, doers, owners, communicators and connectors.

Vision

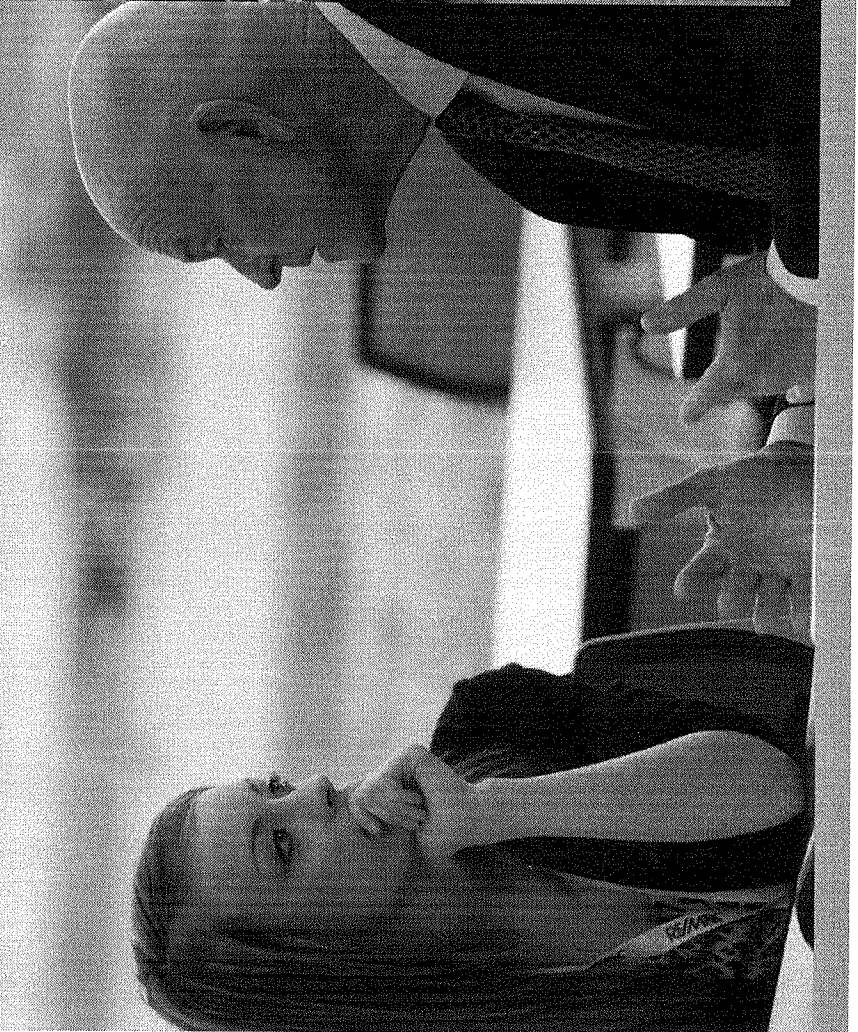
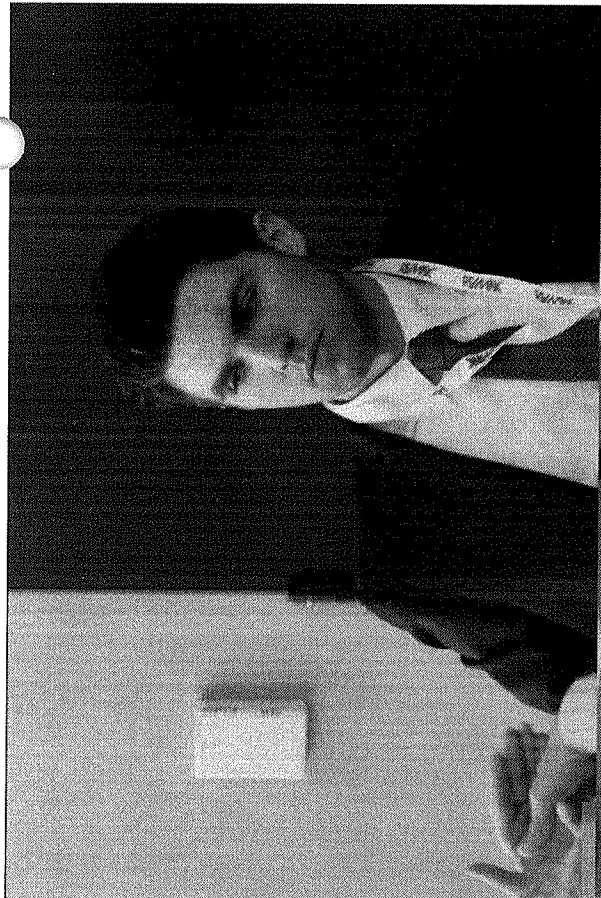
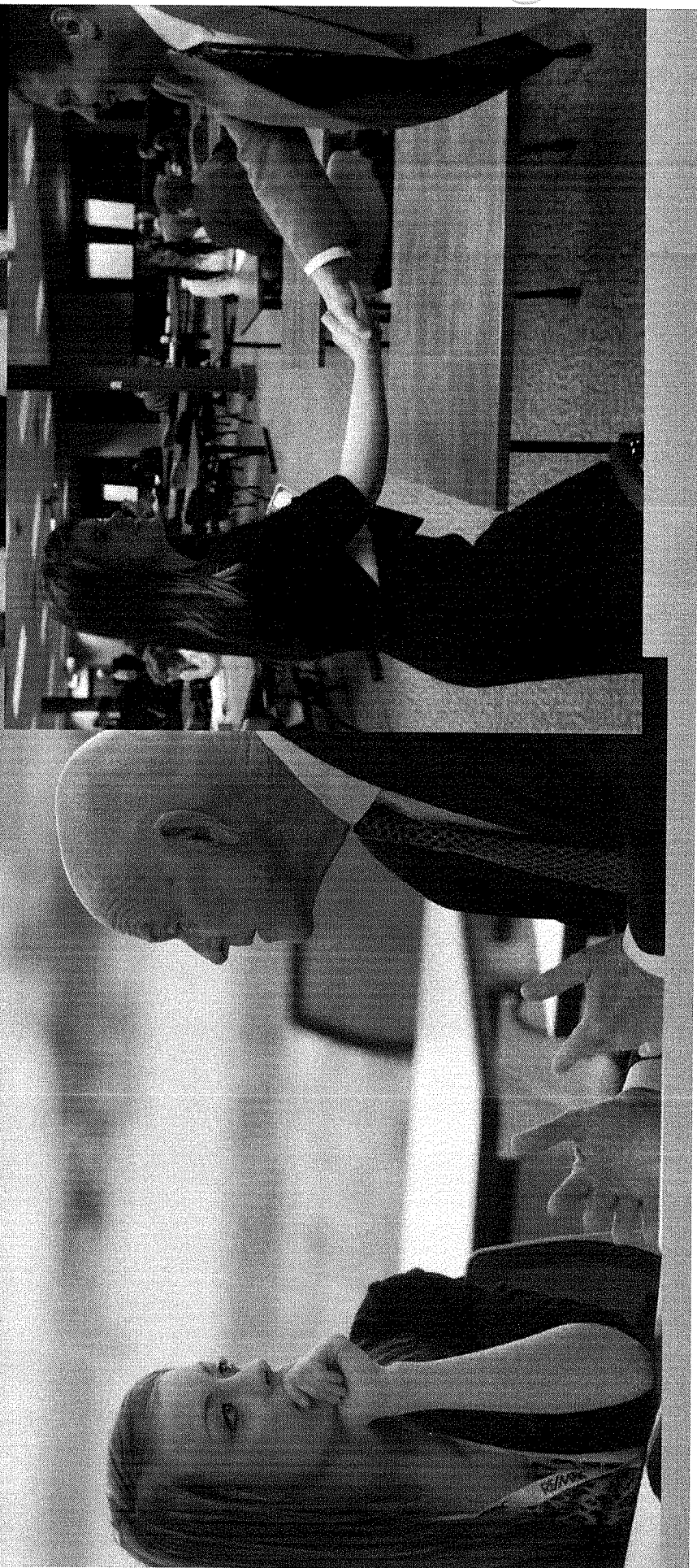
CEO nurtures entrepreneurial thinkers, who possess awareness of themselves, and their community.

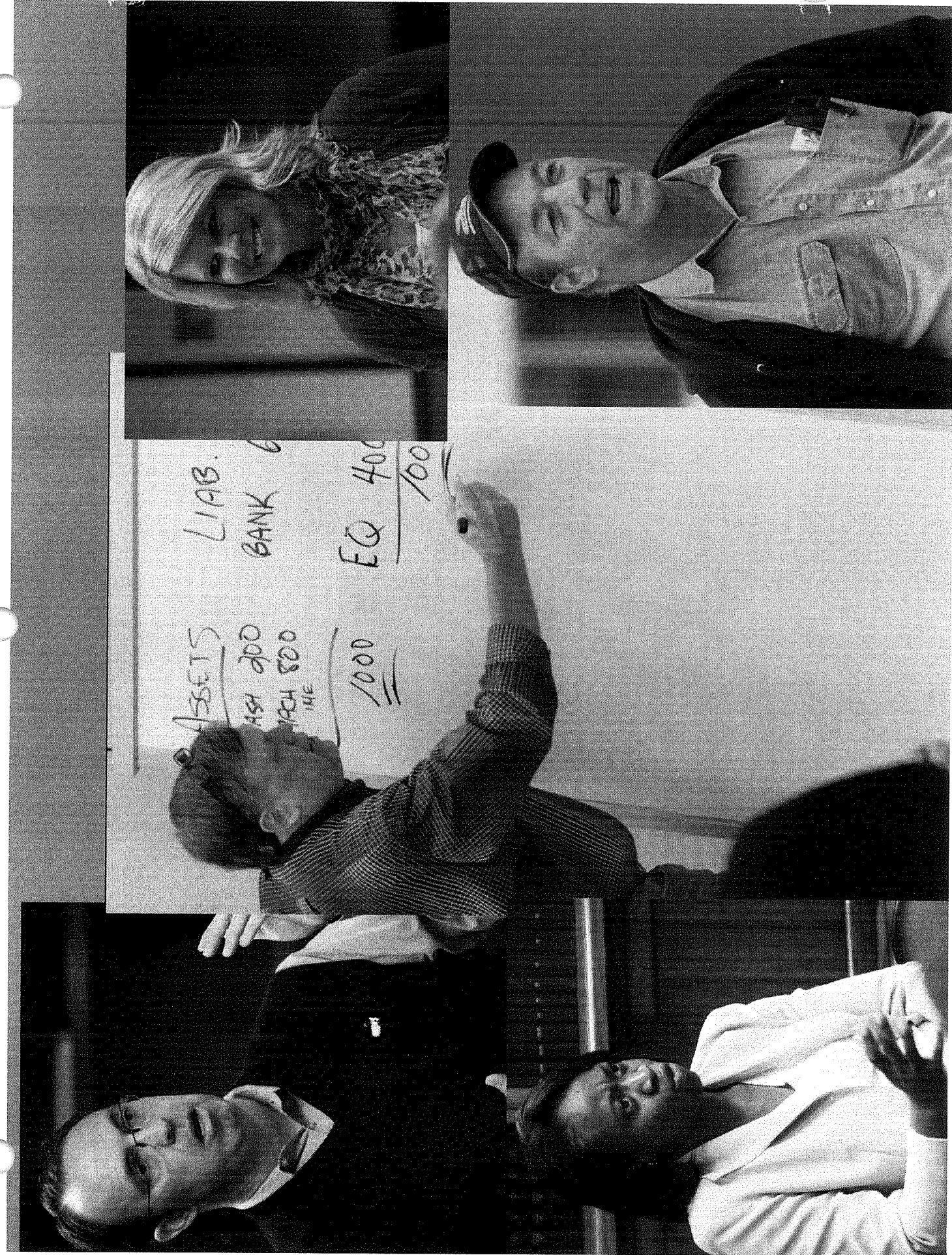
Culture

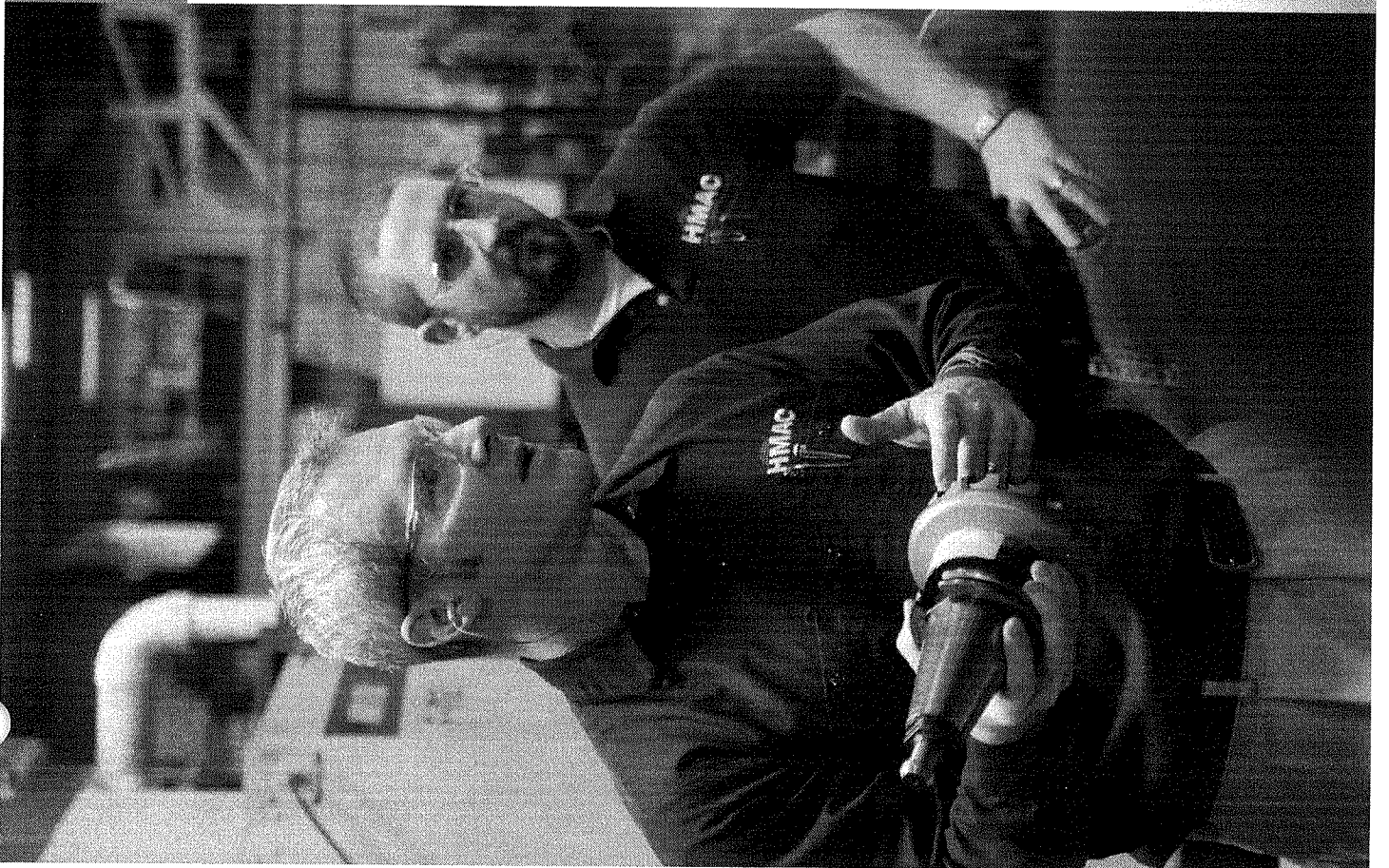
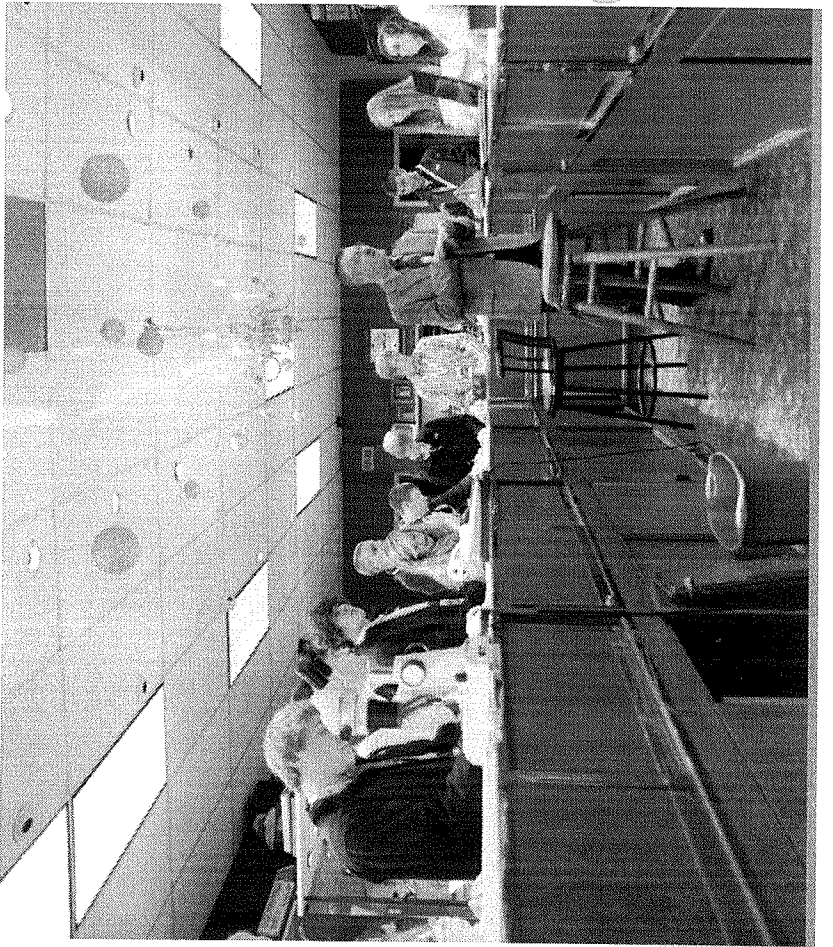
Every day, all day, we represent CEO with a superior work ethic and trustworthiness.

Essential Elements

- Class always meets in a business, not in a school
- Students develop and run a class business and a personal business
- Students will develop business plans for both the class business and their personal business.
- Each student has a business mentor
- Students regularly tour area businesses
- Coursework is based on real life experience, not textbooks, tests, and quizzes
- Members of the business community teach/share their experiences with students, and the class is always open to guests







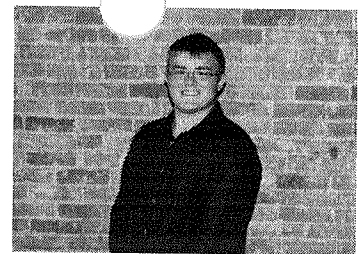
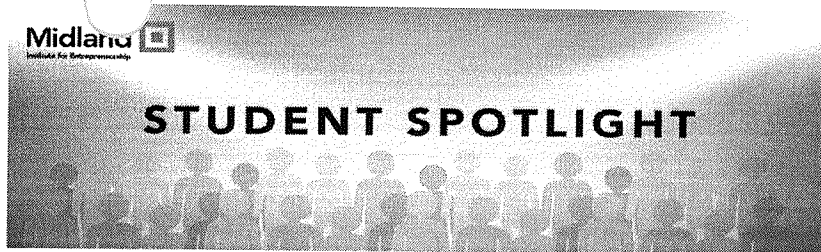
Learning Outcomes

At the end of the CEO course, students are expected to be able to:

- 1) Create and Present an effective business plan
- 2) Demonstrate effective communication and collaboration skills
- 3) Demonstrate their understanding of appropriate professional attire
- 4) Compare and Contrast a wide variety of businesses
- 5) Interact with business owners, community leaders, and class guests
- 6) Execute the creation of a small business

How will we know that we've achieved these outcomes?

- 1) Students will formulate, research, write, and present two business plans
- 2) Students will:
 - write weekly journals
 - interact each week with local business and community leaders
 - observe local businesses in operation
 - actively participate in a class business
 - schedule, plan, and work together at various local events
 - communicate and interact with their business mentor
 - start their own business
 - present their business at the CEO trade show
- 3) Students will attend class each day dressed in appropriate professional attire
- 4) Students will visit 30-50 area businesses
- 5) Students will regularly interact and communicate with:
 - business owners
 - guest speakers
 - guests who visit the class
 - business mentors in a lunch or dinner setting
- 6) Each student will start his or her own small business and present it to the community at the CEO Trade Show



Walker Goodwin: Taking the Bull by the Horns

"If you haven't been recruited yet, let me be the first."

Seventeen-year-old, Walker Goodwin, stared at the words -- written by a University of Nebraska recruiter -- in disbelief. The junior at Newton Community High School had, of course, considered which colleges he might attend after graduation, but to be courted by his dream school as a first-semester-junior was unexpected, to say the least.

But then again, the 'unexpected' is something one comes to expect whilst on their CEO journey (and often, long after that). While some may attribute the unanticipated good fortune to luck or coincidence, we find it has more to do with the individuals who choose to be involved in CEO: hard-working, innovative, energetic people with a heart for entrepreneurship... people like Walker Goodwin.

The Jasper County CEO student is no stranger to hard work. In fact, prior to beginning his CEO journey, the young entrepreneur started his own business, Walker of All Trades, offering 'odd-job' services to members of his community. He has, additionally, been involved in numerous extra-curriculars that include, but are certainly not limited to: football, track, bass fishing, FFA, FCA, livestock judging, 4-H, church youth group, CEO and four high school musicals.

And as it turns out, he's just getting started.

Though the student-ran businesses aren't finalized until the beginning of second semester, Walker chose to get a head start and test-run his business model this past fall. The Arena and Beyond -- a marketing project for young athletes involved in unconventional sports -- officially kicked off at the end of October with high school rodeo. "I'm chest-deep in rodeo athletes right now," says Walker. "I'm promoting it pretty heavily. The dream, of course, is to make it a career."

Each Sunday, Walker posts to The Arena and Beyond's Facebook page, shining light on a new athlete every week. The athlete's name, photo and age are posted, as well as their answers to questions like, "What's your ultimate rodeo goal?" and "What's the best advice you've ever been given?" At this time, Walker's focus is rodeo, but he anticipates highlighting motocross, bass fishing and other uncommon sports in the future.

"It's been a whirlwind," he says, exhaling.

He's speaking, of course, to the attention his posts have been receiving since he launched the Facebook page for his business. Using a "Facebook Live" video feed, Walker's first post was a live interview with friend and fellow rodeo enthusiast, Stetson Bierman. In less than a few hours, the post had 413 views, and, over time, has reached more than 1,000 people.

One of those individuals who came in contact with the page was a recruiter from the University of Nebraska. "I was on the phone with my dad when I saw that first line," says Walker. "My dad was like, 'What? What's going on?' It's just been... amazing."

Though there is a long road ahead for the young entrepreneur and many decisions left to be made, one thing is certain... Walker Goodwin is one to watch in 2017. His spirit, his passion and his work ethic will, undoubtedly, take him places... both in the arena, and beyond.

To follow Walker's story, check out his Facebook page: <https://www.facebook.com/Arenaandbeyond/>



Alumni Spotlight: Mikayla Winters

Mikayla Winters is a creative soul, without a doubt. A freshman at Fontbonne University, in St. Louis, Missouri, this CEO alumna plans to pursue a degree in either marketing or graphic design, with a minor in religious studies. Already, she is involved in campus life and extracurriculars that will, most certainly, enhance her educational experience. Perhaps, that is because Mikayla looks for purpose in all that she does — and especially, in all that she creates.

As a student in the 2015-2016 Effingham County CEO Class, the Dieterich native was like most students — unsure of what kind of business she wanted to run, unsure of where the class would take her. From the very beginning, however, she knew her business would somehow reflect her faith and creative passion.

"Over and over, you're told, 'Make sure you like what you choose to do,'" says Mikayla.

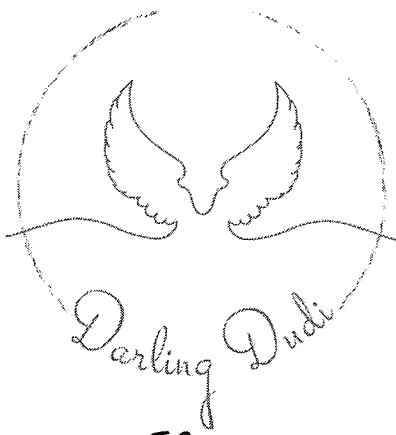
Armed with knowledge, artistic ability and, of course, faith, Mikayla founded Darling Dudi in January 2016, after the passing of her newborn nephew, David, who lived only six months in the St. Louis Children's Hospital NICU.

"It helped that I had a way to remember him," she says, referencing Darling Dudi.

In his honor, Mikayla creates hand-crafted, personalized jewelry - of which she reinvests 10% into commemorative pieces that are donated to mothers who have lost a baby. Her mission is one that has, since its inception, resonated with a large audience. In fact, Mikayla was one of five Effingham County CEO students who were invited to showcase their businesses at the National Trade Show last June. Today, Mikayla continues to run her business and "give love" while she attends college.

"CEO changes you; no matter who you are, you're going to be changed," says Mikayla. "I'm very happy that I decided to be a part of CEO."

To learn more about Mikayla and 'Darling Dudi' visit: <https://www.facebook.com/DarlingDudiJewelry/> or [instagram.com/DarlingDudi](https://www.instagram.com/DarlingDudi).



Hello!

As a member of the Shelby County business community we are reaching out to **YOU** for support!

We have stumbled upon something **AWESOME!!**

It's an opportunity for us to harness our best asset -our **YOUTH**- as an economic development tool.

Local businesses are partnering with Shelby County schools to create an **EXPERIENTIAL** class to teach students business concepts and life skills.

This is a **PARTNERSHIP** between students and businesses, it literally won't work without your awareness and support!

FLIP through these pages to learn more!

Please join us in CEO.
It's very important!

1. Financial Sponsorship

Area business sponsorship is a necessary component to making this program available to area students. Many levels of sponsorship are available for your tax-deductible donation. Please consider supporting Shelby County CEO as an Investor with a commitment for \$1,000 a year for 3 years.

2. Business Classroom

Unlike any classroom environment, these students meet daily at an area business. Do you have an empty training room or time available to host a tour of your business?

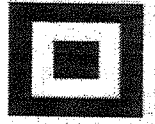
3. Guest Speaker

Every business professional has a story to tell. How did you get your start? What obstacles did you have to overcome? What makes your business unique? You are invited to tell your story!

4. Mentorship

Allow students to take advantage of your real world business knowledge. Mentor opportunities are based on your availability.

Thank you for your consideration!



Pledge Form

Contact Name: _____

Business: _____

Address: _____

Phone: _____

Email: _____

I pledge to support the CEO program in the following ways:

☐ INVESTOR: \$1,000 a year for 3 years

☐ PARTNER: \$500 a year for 3 years

☐ FRIEND OF CEO: One-time donation of \$ _____

☐ MENTOR: Be paired with a student for the course of the class year so that they may call on me with questions and I may offer advice or other support as needed.

☐ HOST SITE: Provide a meeting place for 30 people for up to 9 weeks at a time.

☐ TOUR: The class may tour my business at least one time in the course of the class year.

☐ GUEST SPEAKER: Volunteer to speak to the class about business skills or life skills.

Please note if there are particular skills about which you would like to speak:

Signature _____

_____ Date

CEO Program gets grants from area businesses

Dec 12, 2016



Front row: Wendy Griesemer (SHS guidance counselor), Shane Schuricht (SHS principal), Holly Bauman (The Equity, sponsor & CEO board), Denise Bence (CUSD #4 superintendent), Noel Bolinger (Shelbyville Community Foundation, sponsor & CEO board), Aaron Johnson (Cobank, sponsor), Anna Kiley (Shelby County Economic Development Director), Karen Logan (Ihi-Turbo, sponsor & CEO board), Josh Shallenberger (Shelby Electric Coop, sponsor & CEO board), Dave and Marcia Johnson (sponsors), Susan Tynan (Lake Volunteers Association, sponsor), Tori Ade (Central A&M H.S. student), Trinity Hilton (Central A&M H.S. Student). Back row: Jon Summers (Corps of Engineers, friend of CEO), David Cruitt (County Board chairman), Jim Finks (newstalk WTIM radio, CEO board), Justin Deters (Stew-Stras principal), Jeremy Jokisch (State Farm Insurance, CEO board), Mark Shanks (Monicals Pizza, sponsor), Daniel Norton (J&R Collision, sponsor), Nate Wascher (Shelby County State Bank, sponsor & CEO board), Pam Rincker (Software Solutions, sponsor), Eric Wiley (International Paper, sponsor), Jeff Johnson (Shelbyville mayor), Tyler McClain (Central A&M H.S. student), Charlie Brown (Central A&M H.S. Principal). Submitted photo.

Parents and area business owners are encouraged to an informational meeting about the new Shelby County CEO program on Wednesday, Dec. 14, at 7 p.m. at the Visitor's Center in Shelbyville.

Area schools, community officials and various business leaders presented Anna Kiley, Economic Development Director for Shelby County and Shelby County CEO Administrator, with \$25,000 seed money to start the CEO Program. Midland Institute's critically acclaimed CEO (Creating Entrepreneurial Opportunities) Program is a year-long accredited high school course designed to teach students how to conceptualize, start and run a small business. For more information on the CEO program please visit www.shelbycountyceo.com.

"I'm thrilled with the opportunity for our students in CEO," Kiley said in a news release. "This course is not geared toward the best-performing students. It is for the hard workers and kids who like to be outside of the classroom. Really, the benefit of the program goes beyond the coursework itself. Learning to network, to identify your risk and value to a bank, and to pursue your interests are precious skills that take practice."

The rapid expansion of the CEO program to nearly 50 counties nationwide in six years is a testament that CEO is the standard for entrepreneurship education. Shelby Electric Cooperative along with Sharing Success Partner CoBank donated \$10,000, each contributing \$5,000. IHI Turbo and the Shelbyville Area Community Foundation each donated \$5,000. Several other businesses and individuals donated money to make up the other \$5,000 for the start up money.

Tags:

- Anna Kiley
- Commerce
- Company
- Shelby County
- Ceo
- Economics
- Program
- Administrator
- Individual
- Student

No business is too small, no niche too unique.

Shelby County CEO Investors are the heart of Shelby County CEO. Their annual investment of \$1,000 provides the necessary resources for current-year teacher salary and other expenses, and ensures the sustainability of the Shelby County CEO class for future students. Investor commitments of site tours, being guest speakers and developing positive mentor relationships are critical to the success of Shelby County CEO.

Please visit our website www.shelbycountyceo.com to see view a list of those businesses and individuals who see the value of CEO, and have pledged as an Investor.

We need you, too!

Shelby County Courthouse Exterior Renovation

Shelbyville, Illinois

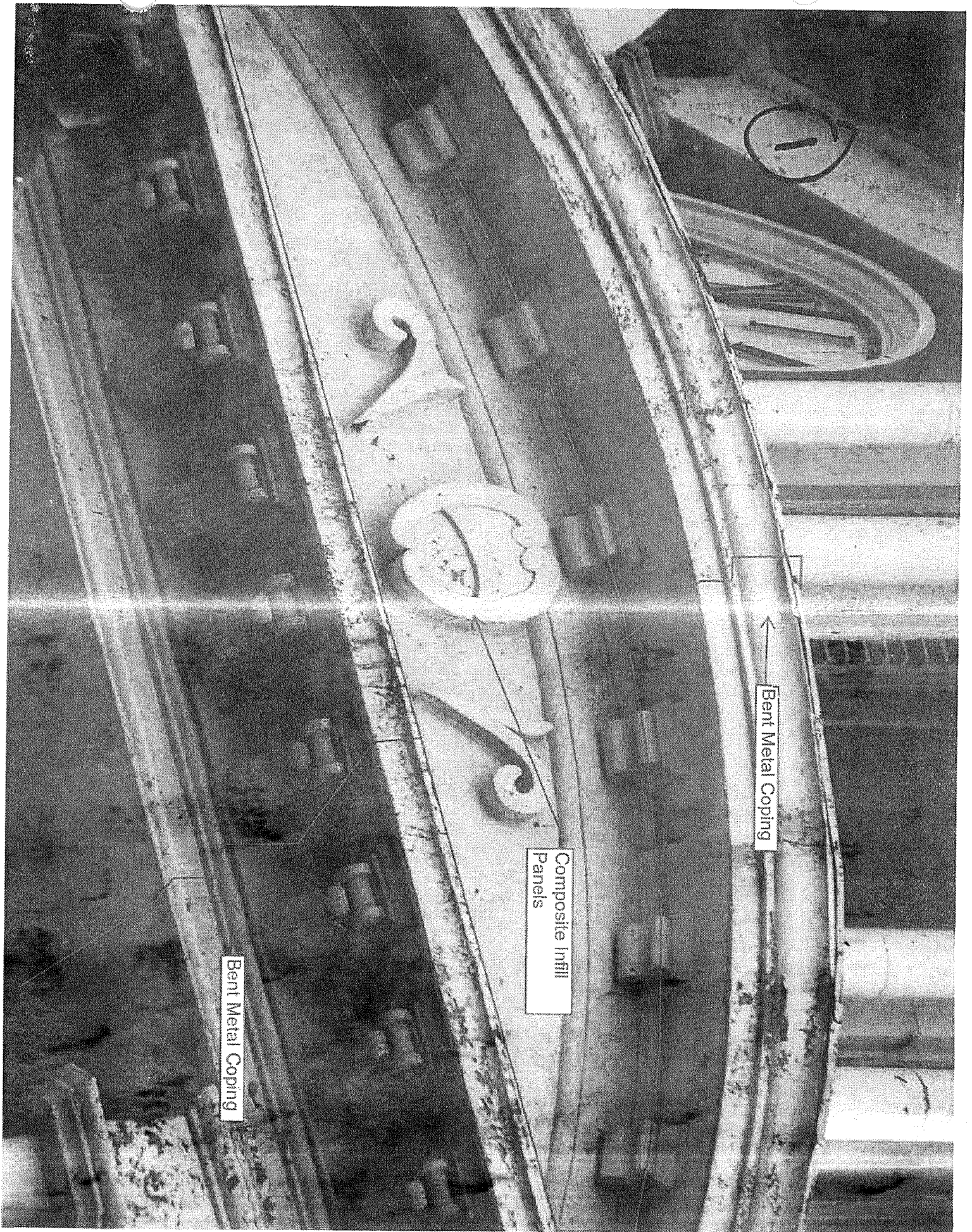
December 21, 2016

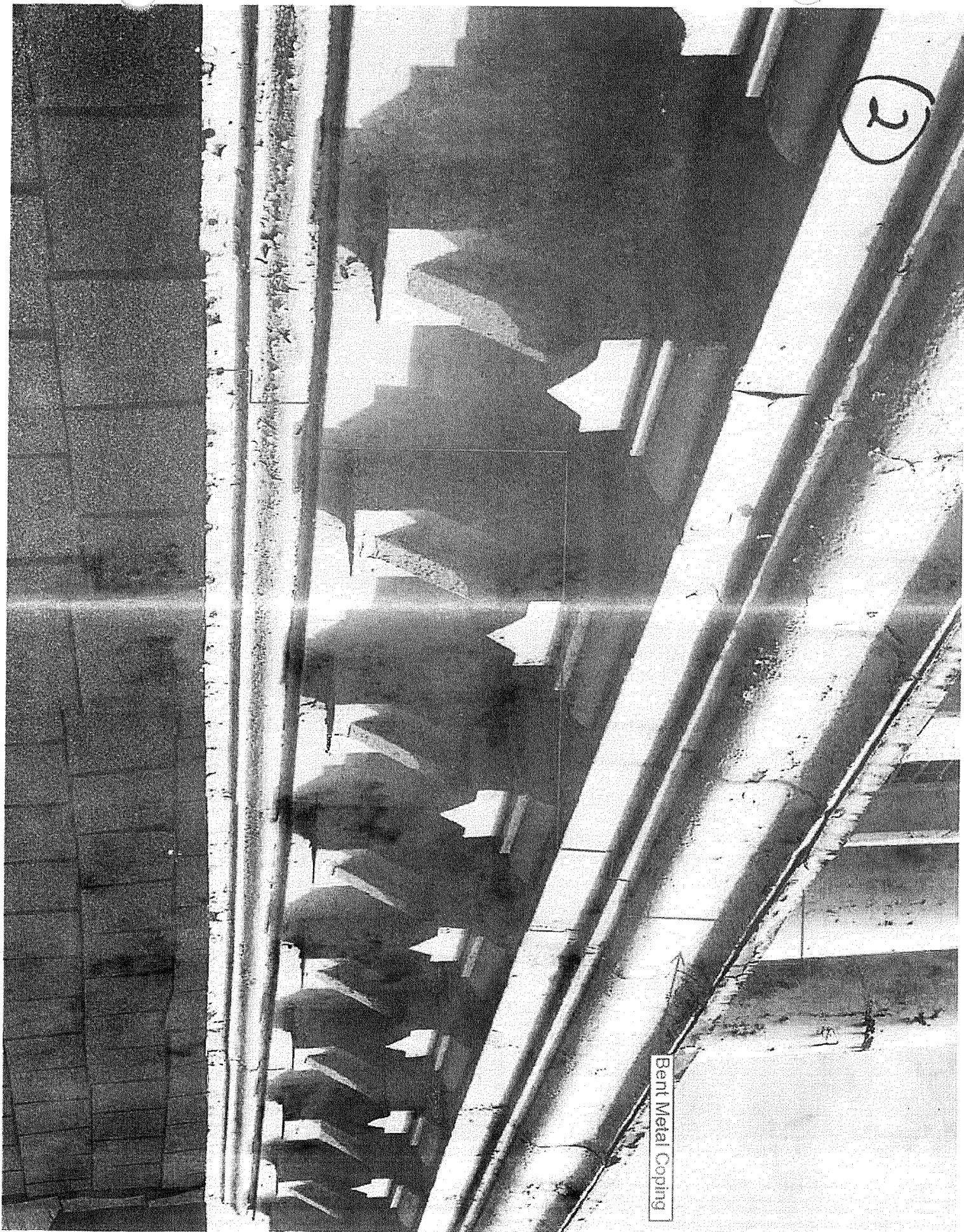


Urz + Associates
Architects PC

13878 North 140th St.
Evington, IL 62401

Description	Bid Price	Contingency 15%	Subtotal	Total Base Bid	Alternate #1	Alternate #2
Base Bid						
CertainTeed Landmark Pro Asphalt Shingles	\$ 238,250.00	\$ 35,737.50	\$ 273,987.50	\$ 273,987.50		
Low Slope Roof -60 mil. TPO Roof - 20 Yr. Warranty w/ Hatches (72 mph)						
Alternate #1						
Metal Shingles - Tamko Metal Works - 50 Yr. Warranty - Class F (110mph)	\$ 262,095.00	\$ 39,314.25	\$ 301,409.25	\$ 301,409.25		
Low Slope Roof -60 mil. TPO Roof - 20 Yr. Warranty w/ Hatches (72 mph)						
Alternate #2						
Rubber Shingles - Majestic Slate Shingles - 50 Yr. Warranty - Class F (110 mph)	\$ 418,771.25	\$ 62,815.69	\$ 481,586.94		\$ 481,586.94	
Copper Flashing						
Low Slope Roof -60 mil. TPO Roof - 20 Yr. Warranty w/ Hatches (72 mph)						
Scaffolding for Upper Tower						
	\$ 58,000.00	\$ 8,700.00	\$ 66,700.00	\$ 66,700.00	\$ 66,700.00	\$ 66,700.00
Downspouts						
Remove and Install New Larger Downspouts	\$ 25,000.00	\$ 3,750.00	\$ 28,750.00	\$ 28,750.00	\$ 28,750.00	\$ 28,750.00
Lightning Protection						
Remove, Repair and Re-install Lightning Protection	\$ 25,000.00	\$ 3,750.00	\$ 28,750.00	\$ 28,750.00	\$ 28,750.00	\$ 28,750.00
Window and Doors						
Window and Door Replacement - Marvin	\$ 397,884.00					
Asbestos Abatement	\$ 1,073,652.00	\$ 161,047.80	\$ 1,234,699.80	\$ 1,234,699.80	\$ 1,234,699.80	\$ 1,234,699.80
Metal Fabrication						
Cornices, Copings and Column Surrounds	\$ 286,865.00	\$ 42,979.75	\$ 329,844.75	\$ 329,844.75	\$ 329,844.75	\$ 329,844.75
Miscellaneous Framing						
Treated Wood Framing	\$ 45,000.00	\$ 6,750.00	\$ 51,750.00	\$ 51,750.00	\$ 51,750.00	\$ 51,750.00
Dentils						
Fypcon Dentils	\$ 130,000.00	\$ 19,500.00	\$ 149,500.00	\$ 149,500.00	\$ 149,500.00	\$ 149,500.00
Masonry Repair, Waterproofing, Repair at Stairs						
	\$ 66,490.00	\$ 9,973.50	\$ 76,463.50	\$ 76,463.50	\$ 76,463.50	\$ 76,463.50
Architectural / Engineering Fees - Estimate						
Environmental Engineering - Asbestos						
Structural Analysis for Scaffolding						
Phase #2 Architectural Fee						
General Conditions						
10%						
Overhead and Profit						
15%						
Total						
	\$ 3,137,369.44		\$ 3,137,369.44	\$ 3,137,369.44	\$ 3,171,646.63	\$ 3,396,868.73





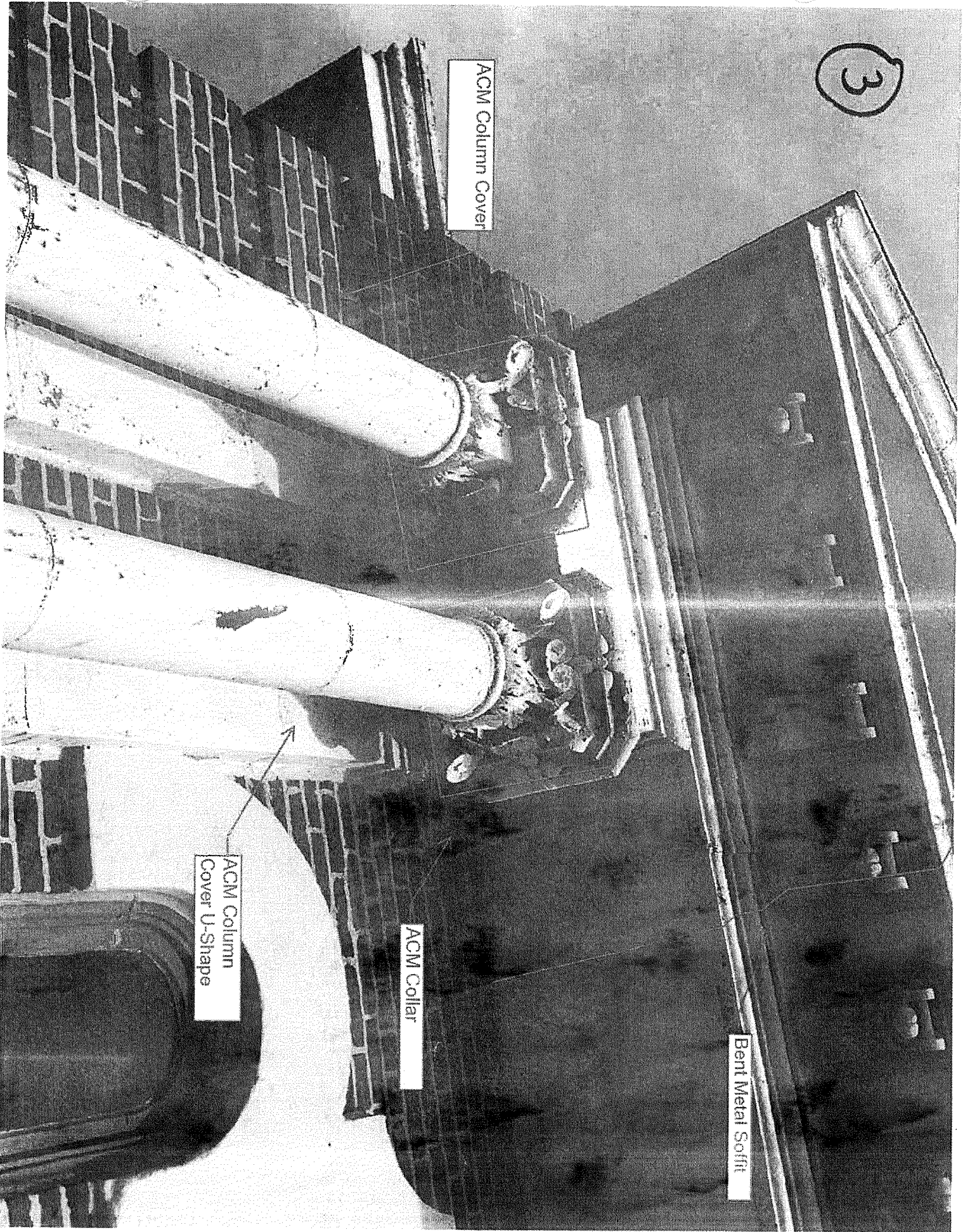
3

ACM Column Cover

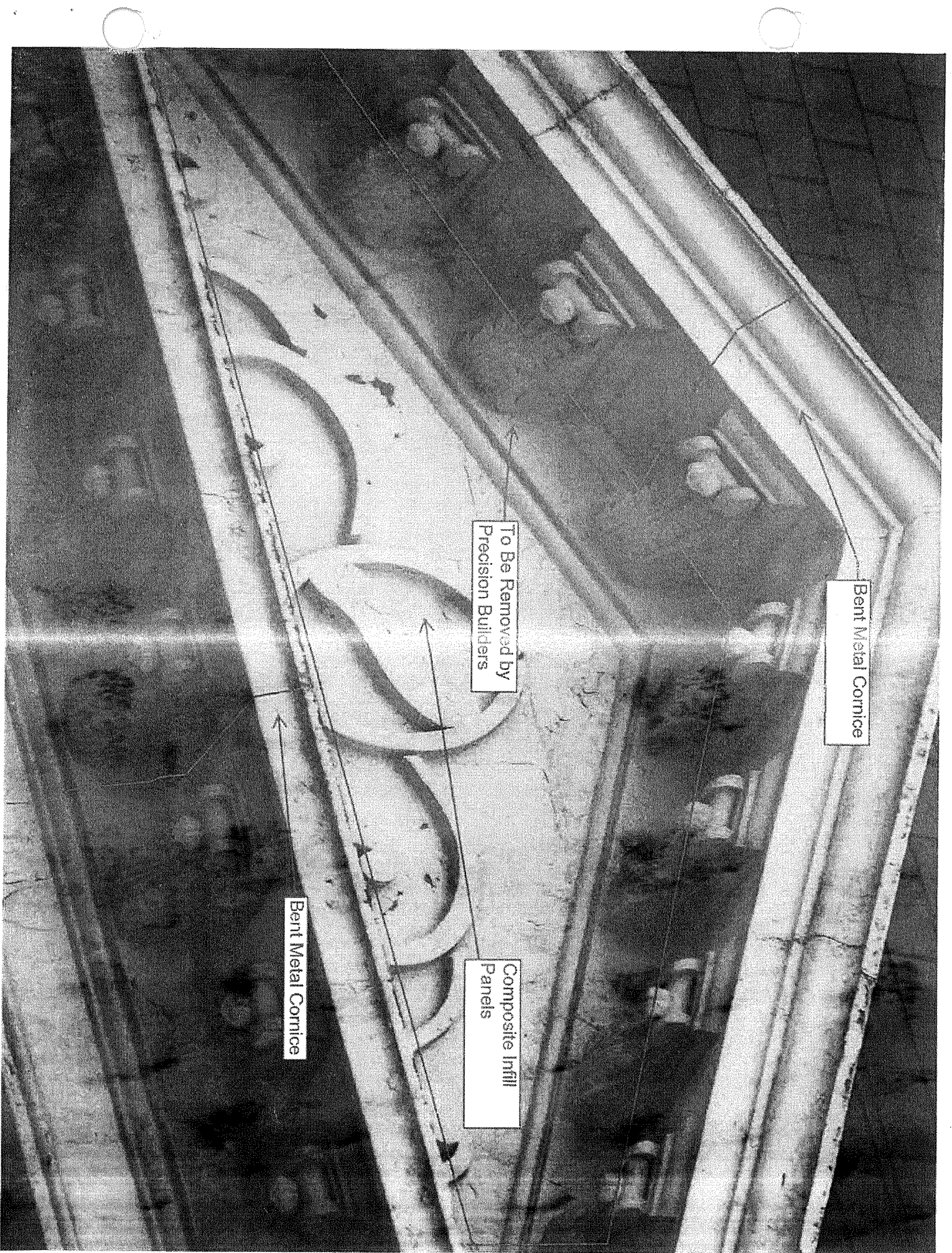
Bent Metal Soffit

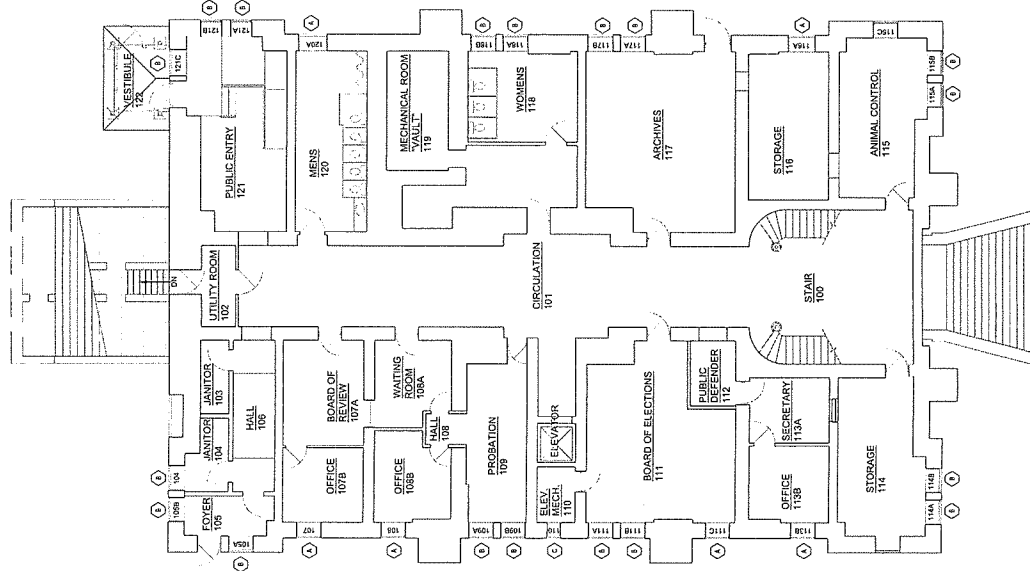
ACM Collar

ACM Column
Cover U-Shape

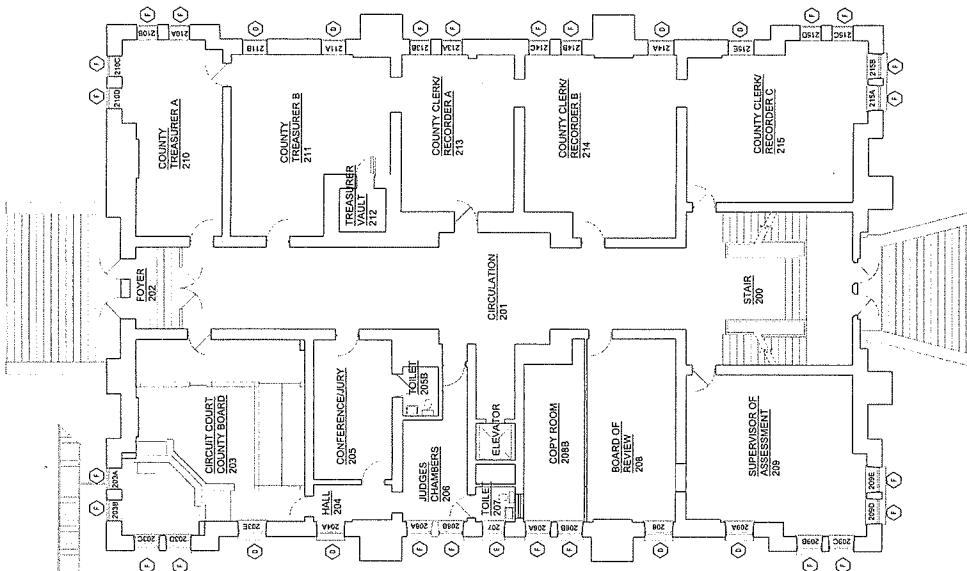








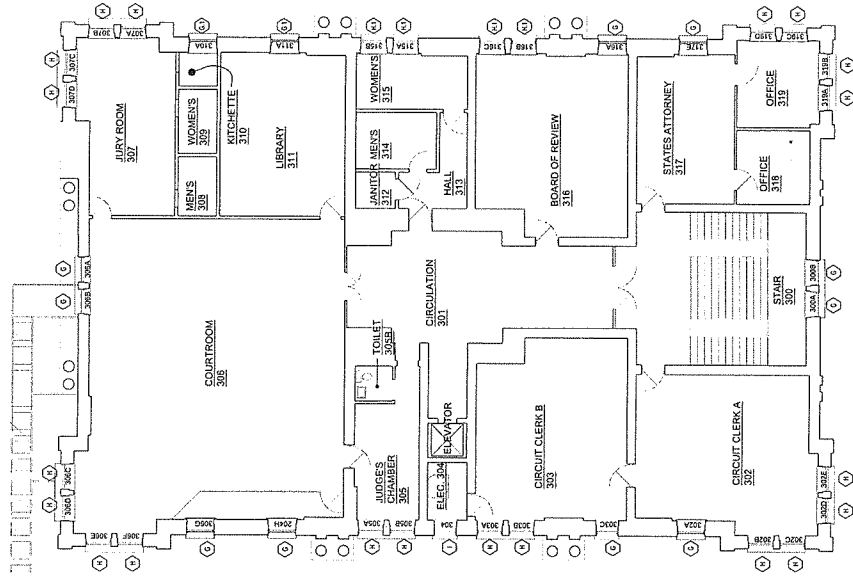
GROUND FLOOR PLAN
SCALE: 1/8" = 1'-0"



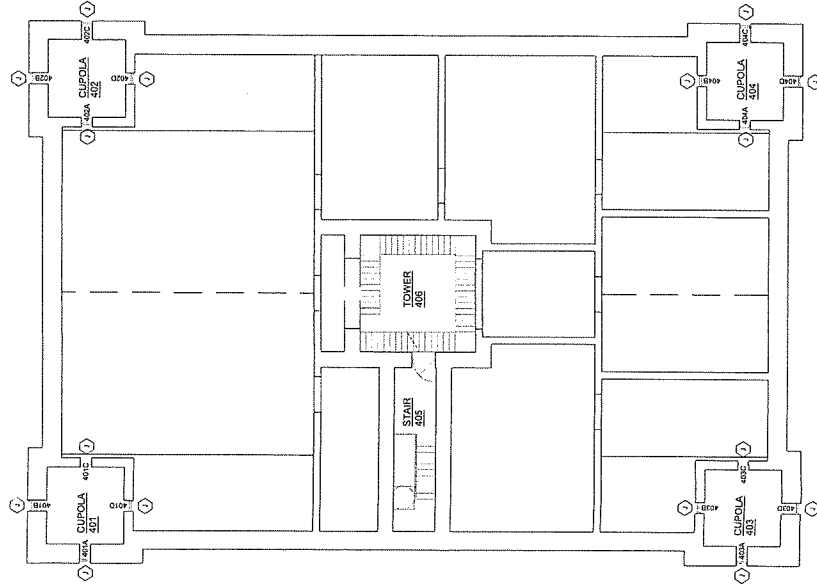
FIRST FLOOR PLAN
SCALE: 1/8" = 1'-0"

	Utz + Associates - Architects P.C. 505 South Maple St. Suite B, Effingham, Illinois 62401 Tel: (217) 342-0240 License # 184.005839	PRELIMINARY NOT FOR CONSTRUCTION DATE: JANUARY 2016 BY: WDJ	PROPOSED ROOF AND WINDOW WORK FOR SHELBY COUNTY COURTHOUSE - PHASE ONE (FY 2016) 301 EAST MAIN STREET DECATURVILLE, IL 62505	SHEET NO. A1 OF 5 GROUND FLOOR PLAN & FIRST FLOOR PLAN
--	---	--	---	---

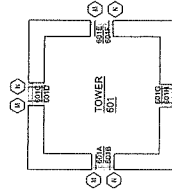
6F



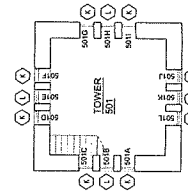
SECOND FLOOR PLAN
SCALE 1/8" = 1'-0"



ATTIC PLAN
SCALE 1/8" = 1'-0"



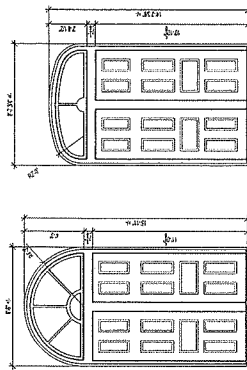
TOWER PLAN #2
SCALE 1/8" = 1'-0"



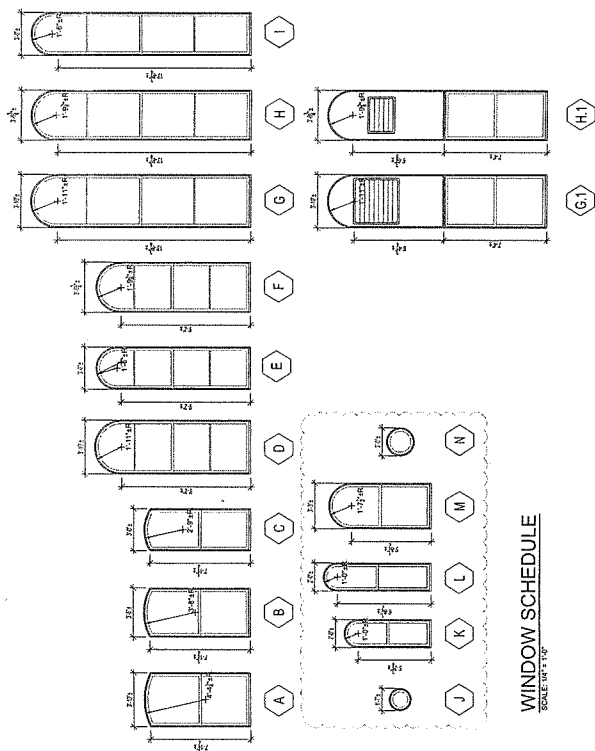
TOWER PLAN #1
SCALE 1/8" = 1'-0"

[illegible]

SCALE: 1/4" = 1'-0"

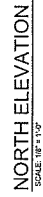


SCALE: 1/4" = 1'-0"





NOTE SYMBOLS	
	MASONRY REPAIR NOTE SEE NOTES SHEET NO.
	ROOFING REPAIR NOTE SEE NOTES SHEET NO.
	EXTERIOR PAINTING NOTE SEE NOTES SHEET NO.



EAST ELEVATION
SCALE 1/8" = 1'-0"

NOTE SYMBOLS	
	MASONRY REPAIR NOTES. SEE NOTES SHEET NO. _____
	ROOFING REPAIR NOTES. SEE NOTES SHEET NO. _____
	EXTERIOR PAINTING NOTES. SEE NOTES SHEET NO. _____

PRELIMINARY
DRAWING

CLIENT

PROJECT

SEAL

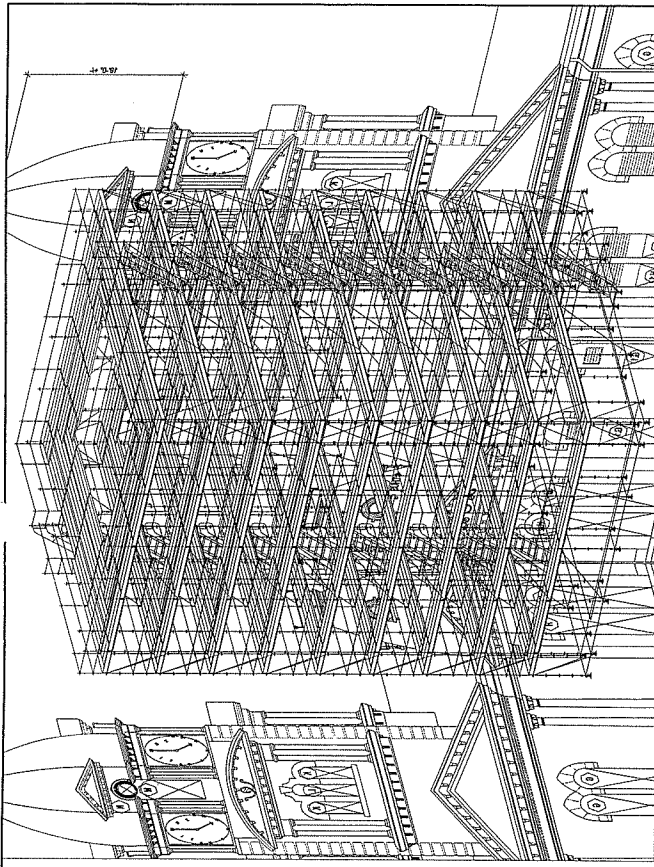
NOTES

- Engineer of record shall check and verify that the existing structure can support the proposed scaffolding system by the scaffold structure.
- Contractor must verify that dimensions of the existing structure are correct. If discrepancies are found, they must be reported to the equipment provider and engineer before proceeding with erection. All discrepancies must be corrected to all OSHA, SSP and SAA guidelines and manufacturer's.
- Scaffold shall be erected by trained scaffold erectors under the supervision of a qualified person as defined by OSHA.
- Scaffold erection shall be done in a systematic manner to avoid overloading any side.
- All calculations and design are based on the design of the scaffold structure. All calculations shall be enclosed with the scaffold design.
- Scaffold shall not be enclosed unless approved in plan.
- Scaffold shall not be altered or modified without the knowledge and consent of the scaffold installer's engineer.
- Provide adequate site for scaffold posts and use base plates.

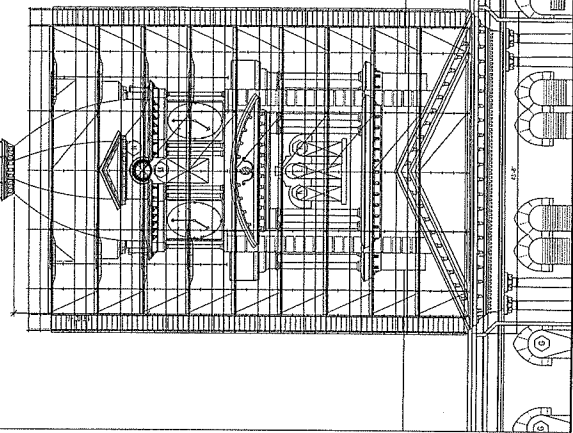
Legend

1/8" = 1'-0"
1/4" = 1'-0"
1/2" = 1'-0"
3/4" = 1'-0"
1" = 1'-0"

DATE: _____
DRAWN: _____
CHECKED: _____

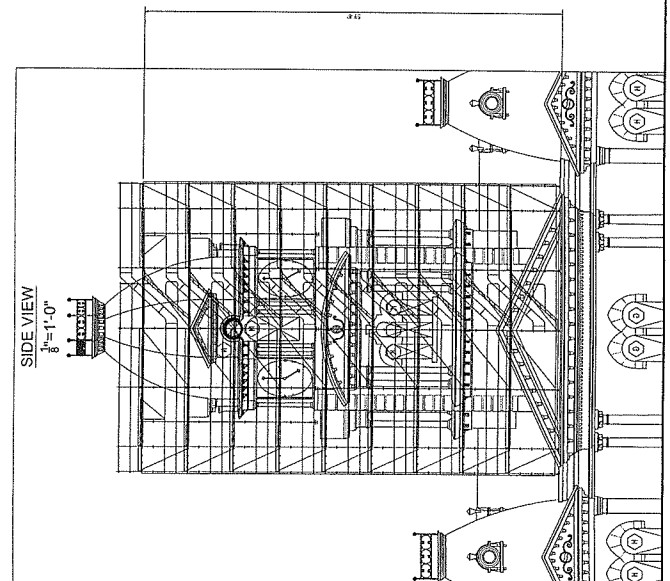
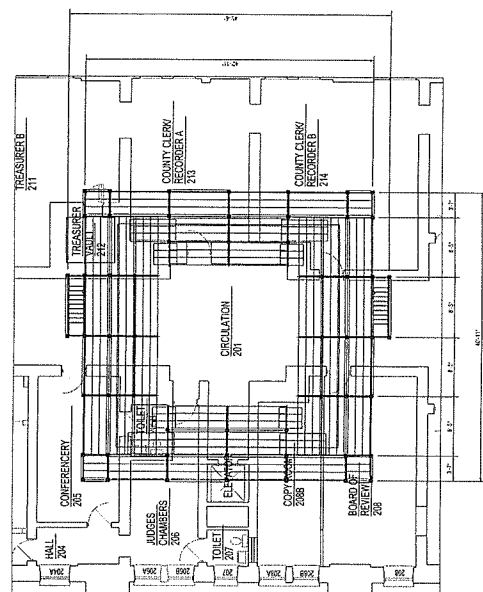


FRONT VIEW
1/8" = 1'-0"



SIDE VIEW
1/8" = 1'-0"

PLAN VIEW
1/8" = 1'-0"



Resolution Number: 2017-01

Applicants: Effingham Equity

Whereas, petition by Effingham Equity, wishing to petition for a special exception, for property that is currently zoned Agriculture (Ag), for storage of fertilizer. The property is located at S14 T11N R5E~SE NW & W 33' OF SW NE & N 1/2 SW & W 33' OF NW SE~120.21 AC or 1240 N State Highway 32 Strasburg, IL 62465. The entirety of said property will be rezoned to Ag with a Special Exception;

Whereas, hearings with respect to this rezoning request concerning the said real estate have been held before the Shelby County Planning Commission;

NOW, THEREFORE, BE IT HEREBY RESOLVED by the County Board of Shelby County assembled this 11th day of January, 2017, that the special exception request for the said real estate is approved.

BE IT FURTHER RESOLVED that the Zoning Administrator is hereby directed to issue Notice of District Change to the owner of the said real estate.

Duly adopted and approved this 11th day of Jan., 2017.



David Cruitt, Chairman
Shelby County Board

Ayes 21

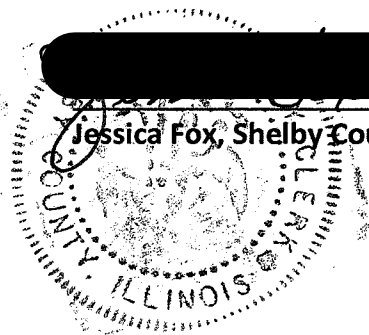
Nays 0

Abstain 0

ATTEST:



Jessica Fox, Shelby County Clerk



Requesting County Engineer
appointment Consent from IDOT

TO: THE SHELBY COUNTY BOARD

WE, THE MEMBERS OF THE ROAD AND BRIDGE COMMITTEE, HAVING
EXAMINED THE ATTACHED


RESOLUTION X


PETITION _____


AGREEMENT _____


DO HEREBY RECOMMEND APPROVAL OF SAME BY THE COUNTY BOARD.

RESPECTFULLY SUBMITTED,
ROAD & BRIDGE COMMITTEE











**Illinois Department
of Transportation**

**Resolution Requesting Consent of the
Department of Transportation to the
Reappointment of the Incumbent as County
Engineer**

2017-02

WHEREAS, a vacancy exists (will exist) on 5/3/2017, in the office of County Engineer in
Shelby County, Illinois due to the expiration of the six-year term of the incumbent County Engineer
Alan Spesard, and

WHEREAS, in accordance with 605 ILCS 5/5-201, the County Board must request and receive the consent of the
Department of Transportation before the reappointment of the incumbent can be made:

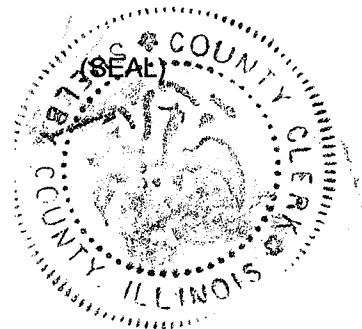
THEREFORE, BE IT RESOLVED, that the County Board of Shelby County does
hereby request the consent of the Department of Transportation to the reappointment of
Alan Spesard as County Engineer, and

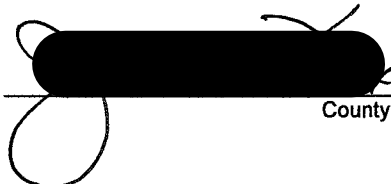
BE IT FURTHER RESOLVED, that the clerk is hereby directed to transmit two (2) certified originals of this resolution to
the Department of Transportation, through its Regional Engineer's office at Effingham, Illinois.

STATE OF ILLINOIS)
) SS
COUNTY OF Shelby)

I, Jessica Fox, County Clerk in and for said County, in the State aforesaid, and keeper of the
records and files thereof, as provided by statute, do hereby certify the foregoing to be a true, perfect and complete copy of a
resolution adopted by the Shelby County Board at its regular meeting held at
Shelbyville, Illinois on 1/11/2017.

IN TESTIMONY WHEREOF, I have hereunto set my hand and affixed the seal of the County at my office in
Shelbyville in said County this 11th day of Jan., 2017.




County Clerk

Resolution to
Reappoint County
Engineer

TO: THE SHELBY COUNTY BOARD

WE, THE MEMBERS OF THE ROAD AND BRIDGE COMMITTEE, HAVING
EXAMINED THE ATTACHED

RESOLUTION

X

PETITION

AGREEMENT

DO HEREBY RECOMMEND APPROVAL OF SAME BY THE COUNTY BOARD.

RESPECTFULLY SUBMITTED,
ROAD & BRIDGE COMMITTEE

**Resolution Reappointing
County Engineer**

WHEREAS, a vacancy will exist in the position of County Engineer in Shelby County caused by the expiration of the six-year term of the incumbent, Alan Spesard, on May 2, 2017, and

WHEREAS, the Shelby County Board by resolution dated January 11, 2017, requested the consent of the Department of Transportation to the reappointment of Alan Spesard, and

NOW, THEREFORE, BE IT RESOLVED, by the Shelby County Board that Alan Spesard be, and is hereby appointed County Engineer for Shelby County for a term of six years effective May 2, 2017, and said appointment be in compliance with 605 ILCS 5/5-201, and

BE IT FURTHER RESOLVED, by the Shelby County Board that the salary of the County Engineer be fixed as follows:

The COUNTY shall pay to the EMPLOYEE as County Engineer, the sum of \$105,400 for the first year, effective from the commencement date of this Agreement and further that the EMPLOYEE's future salary shall be increased each year to an amount equal to 100% of the salary level for Shelby County as contained in the County Engineer's Recommended Salary Program as determined by the Illinois Department of Transportation each year, and The attached agreement between Alan Spesard and the Shelby County Board be made a part of this resolution.

BE IT FURTHER RESOLVED, by the Shelby County Board that the County Clerk is hereby directed to forward two certified copies of this resolution to the Department of Transportation.

STATE OF ILLINOIS)
COUNTY OF SHELBY) SS

I, Jessica Fox, County Clerk in and for said County in the state aforesaid and keeper of the records and files thereof, as provided by statute, do hereby certify the foregoing to be a true and perfect and complete copy of a RESOLUTION adopted by the County Board of Shelby County at its regular meeting held in Shelbyville, Illinois on 1/11/2017. IN TESTIMONY WHEREOF, I have hereunto set my hand and affixed the seal of said County at my office in Shelbyville in said County this 11th day of Jan. A.D.

2017.



County Clerk

AGREEMENT

COUNTY ENGINEER

WHEREAS, a vacancy will exist in the position of County Engineer in Shelby County, caused by the expiration of the six-year term of the incumbent on May 2, 2017, and it is mutually agreed that S. Alan Spesard shall be reappointed to the position of County Engineer in and for the County of Shelby, State of Illinois. Said appointment shall commence on May 2, 2017, and proceed until May 2, 2023. Said appointment is to be in compliance with 605 ILCS 5/5-201.

IT IS MUTUALLY AGREED that:

- a) A late model automobile of a make and model mutually acceptable to the County and Mr. Spesard shall be provided for the exclusive use of the County Engineer for business use including the taking of the vehicle home and back each day to allow for required regular hours use.
- b) The base salary of the County Engineer shall be \$105,400 beginning May 2, 2017 as recommended by the Illinois Department of Transportation.
- c) Increases to the base salary shall be made each May 2nd as recommended by the Illinois Department of Transportation.
- d) A policy of health insurance in force for other county officials shall be included for the County Engineer of an equal amount and character as other county officials.
- e) Other fringe benefits including but not limited to paid holidays, sick leave, vacation leave, personal days, retirement program, as well as other benefits received by the other county officials shall be granted to the County Engineer.
- f) Expenses for the required outside business meetings, educational courses, and conventions shall be reimbursed as incurred.
- g) The County Engineer shall devote his full time and attention and the best efforts to the work of the Shelby County Highway Department and shall not actively conduct other business unrelated to the Shelby County Highway Department during normal business days and hours.

THIS AGREEMENT concurred this 11th day of January, 2017.

ROAD AND BRIDGE COMMITTEE

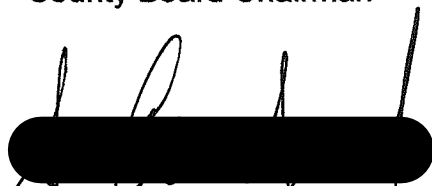
 _____, Chairman

 _____, Member

 _____, Member

 _____, Member

 _____
County Board Chairman

 _____
S. Alan Spesard
County Engineer, Shelby County



Illinois Department of Transportation

2300 South Dirksen Parkway / Springfield, Illinois / 62764

November 15, 2016

Mr. Joel Moore, President
Illinois Association of County Engineers
712 South Second Street
Springfield, Illinois 62704

Dear Mr. Moore:

Enclosed are the new 2017 recommended salaries for the county engineers' salary program, effective January 1, 2017. The county rankings and associated recommended salaries have been updated based on the most current data available. The salaries have also been increased by two percent.

The joint-county state agreement (BLR 09220) and the annual county board resolution (BLR 09221) are available through the IDOT website and should be used for the county engineers' salaries.

Thank you for your interest in the Illinois transportation system. If you have any questions or need additional information, please contact Maureen E. Kastl, Acting Engineer of Local Roads and Streets, 2300 South Dirksen Parkway, Room 205, Springfield, Illinois 62764, or telephone her at (217) 782-3805.

Please share this information with your members.

Sincerely,

A black rectangular redaction box covering the signature of Priscilla A. Tobias.

Priscilla A. Tobias, P.E.
Director, Office of Program Development

Enclosure

cc: David Marth, IACE Vice President (Greene County)

CY 2017 County Engineer Recommended Salaries
Re-Ranked with 2% Salary Increase and Bottom Two Ranks Increased by \$3500

2017 RANK	COUNTY	2017 Salary 2% Increase
1	COOK	
2	DUPAGE	
3	LAKE	
4	KANE	139,100
5	WILL	138,100
6	WINNEBAGO	136,800
7	MCHENRY	132,200
8	MCLEAN	131,100
9	PEORIA	129,200
10	ST CLAIR	127,300
11	SANGAMON	127,100
12	LASALLE	126,500
13	MADISON	121,400
14	KANKAKEE	120,900
15	CHAMPAIGN	120,500
16	TAZEWELL	119,700
17	WILLIAMSON	119,400
18	MACON	119,100
19	ROCK ISLAND	118,900
20	OGLE	118,700
21	DEKALB	118,200
22	ADAMS	118,000
23	KENDALL	117,000
24	KNOX	116,300
25	WHITESIDE	116,000
26	STEPHENSON	114,900
27	GRUNDY	113,600
28	MACOUPIN	113,200
29	HENRY	112,900
30	LIVINGSTON	112,600
31	VERMILION	112,300
32	JACKSON	111,800
33	LEE	111,400
34	IROQUOIS	111,100
35	BUREAU	110,400
35	COLES	110,400
35	FULTON	110,400
38	BOONE	109,800
39	MARION	109,500
40	JEFFERSON	109,000
40	WOODFORD	109,000
42	CHRISTIAN	108,500
43	MORGAN	108,000
44	EFFINGHAM	107,600
45	CLINTON	105,900
46	MONTGOMERY	105,700
47	JODAVIESS	105,500
48	SHELBY	105,400
49	FRANKLIN	105,100
49	MCDONOUGH	105,100
51	RANDOLPH	104,400

← *

2017 RANK	COUNTY	2017 Salary 2% Increase
52	PERRY	104,100
53	MONROE	103,700
54	LOGAN	103,100
55	CRAWFORD	101,700
56	FAYETTE	101,500
57	UNION	100,200
58	HANCOCK	100,000
59	WARREN	99,500
60	SALINE	99,200
61	MASSAC	98,800
62	WAYNE	98,700
63	EDGAR	98,600
64	JERSEY	98,500
65	PIKE	96,800
66	DOUGLAS	96,600
67	WHITE	96,300
68	CLARK	95,700
69	MERCER	95,400
70	WASHINGTON	95,200
71	DEWITT	94,900
71	JASPER	94,900
73	BOND	94,700
74	CARROLL	94,600
75	RICHLAND	94,400
76	PIATT	93,500
77	JOHNSON	92,700
78	MASON	91,800
79	LAWRENCE	91,700
80	CLAY	91,600
81	MENARD	91,500
82	CALHOUN	91,300
83	GREENE	91,100
84	FORD	89,900
85	MARSHALL	89,400
86	ALEXANDER	88,700
87	CASS	88,600
88	PULASKI	88,100
89	MOULTRIE	87,800
90	HAMILTON	87,400
91	WABASH	86,000
92	HARDIN	83,000
93	CUMBERLAND	82,800
94	HENDERSON	82,700
95	STARK	82,300
96	SCHUYLER	82,200
97	GALLATIN	81,500
98	BROWN	81,000
98	PUTNAM	81,000
100	EDWARDS	79,400
101	SCOTT	79,100
102	POPE	77,400

Resolution in Support of Improving and Expanding High-Speed Internet in Shelby County

2017-04

WHEREAS, reliable and high-speed residential internet services are increasingly important for education and economic vitality purposes, yet reliable, high-speed internet capability is lacking for many residences in much of rural Shelby County, and;

WHEREAS, high-speed, accessible and affordable broadband is essential for job creation, education, health care, the enhancement of safe and connected communities, civic engagement, government transparency and responsiveness, reduced carbon emissions and emergency preparedness, and;

WHEREAS, the Shelby County Board has determined that a comprehensive, robust and competitively priced broadband high-speed internet infrastructure would benefit the county in various ways including:


Encouragement of technology-driven business with new transformative technologies able to offer opportunity and rewarding careers attractive to our young people, retaining our most precious resource;

Attraction and retention of small businesses, start-ups and entrepreneurial initiatives reliant on affordable high-speed connectivity;

WHEREAS, the Shelby County Board has determined that a strategic approach to broadband will benefit Shelby County's economic development and create tools to achieve the County's goals for prosperity, health and equity;

NOW THEREFORE BE IT RESOLVED by the Shelby County Board to approve a Resolution in support of county-wide improvements in high-speed internet that may lead to a collaborative plan and support the next generation of broadband infrastructure for all of Shelby County.

Duly adopted and approved this 11th day of January, 2017


David Cruitt, Chairman
Shelby County Board

Attest,


Jessica Fox, Shelby County Clerk

Jessica Fox

**Shelby County Clerk & Recorder
301 E. Main
P.O. Box 230
Shelbyville, Illinois 62565
217-774-4421**

January 13, 2017

Senator Chapin Rose
510 S. Staley Rd.
Ste D
Champaign, IL 61822

Dear Senator Rose,

Please find enclosed a Resolution supporting the improvement and expansion of high-speed internet in Shelby County. The Shelby County Board unanimously voted to pass this resolution at their meeting held on January 11, 2017. I know you are aware of the lack of high-speed internet in certain rural areas of the state. We in Shelby County would greatly appreciate any support you could give to encourage growth and expansion of this very important utility. Thank you for everything you do, not only for the people of Shelby County, but also for the people of the 51st district. We are fortunate to have your representation.

Respectfully,


Jessica Fox
Shelby County Clerk

Jessica Fox

**Shelby County Clerk & Recorder
301 E. Main
P.O. Box 230
Shelbyville, Illinois 62565
217-774-4421**

January 13, 2017

Congressman John Shimkus
101 N. 4th St., Suite 303
Effingham, IL 62401

Dear Congressman Shimkus,

Please find enclosed a Resolution supporting the improvement and expansion of high-speed internet in Shelby County. The Shelby County Board unanimously voted to pass this resolution at their meeting held on January 11, 2017. I know you are aware of the lack of high-speed internet in certain rural areas of the state. We in Shelby County would greatly appreciate any support you could give to encourage growth and expansion of this very important utility. Thank you for everything you do, not only for the people of Shelby County, but also for the people of the 15th district. We are fortunate to have your representation.

Respectfully,


Jessica Fox
Shelby County Clerk

Shelby County Clerk & Recorder
301 E. Main
P.O. Box 230
Shelbyville, Illinois 62565
217-774-4421

January 13, 2017

Representative Brad Halbrook
PO Box 644
Shelbyville, IL 62565

Dear Representative Halbrook,

Please find enclosed a Resolution supporting the improvement and expansion of high-speed internet in Shelby County. The Shelby County Board unanimously voted to pass this resolution at their meeting held on January 11, 2017. I know you are aware of the lack of high-speed internet in certain rural areas of the state. We in Shelby County would greatly appreciate any support you could give to encourage growth and expansion of this very important utility. Best wishes as you begin your term as State Representative for the 102nd District. I know you have a lot of hard work ahead of you. As always, if my staff or I can be of assistance with anything, please don't hesitate to contact us. Thank you.

Respectfully,


Jessica Fox
Shelby County Clerk

Cult 15

TO: THE SHELBY COUNTY BOARD

WE, THE MEMBERS OF THE ROAD AND BRIDGE COMMITTEE, HAVING
EXAMINED THE ATTACHED

RESOLUTION X

PETITION _____

AGREEMENT _____

DO HEREBY RECOMMEND APPROVAL OF SAME BY THE COUNTY BOARD.

RESPECTFULLY SUBMITTED,
ROAD & BRIDGE COMMITTEE

[REDACTED]

[REDACTED]

[REDACTED]

[REDACTED]

RESOLUTION

2017-05

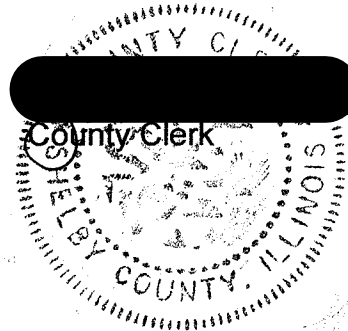
BE IT RESOLVED, by the County Board of Shelby County, that the following contracts be awarded as listed below as received at a letting held on January 6, 2017, for various sizes of pipes and bands.

Group 1	Contech Engineered Solutions	\$20,547.51
Group 2	Contech Engineered Solutions	\$34,194.58

STATE OF ILLINOIS)
) SS
COUNTY OF SHELBY)

I, Jessica Fox County Clerk in and for said County in the State aforesaid, and keeper of the records and files thereof, as provided by statute, do hereby certify the foregoing to be a true, perfect, and complete copy of a Resolution adopted by the County Board of Shelby County at its regular meeting held in Shelbyville, Illinois on January 11, 2017.

IN TESTIMONY WHEREOF, I have hereunto set my hand and affixed the seal of said County at my office in Shelbyville in said County this 11th day of January, 2017 A.D.



[illegible]

Rock

TO: THE SHELBY COUNTY BOARD

WE, THE MEMBERS OF THE ROAD AND BRIDGE COMMITTEE, HAVING
EXAMINED THE ATTACHED


RESOLUTION X


PETITION

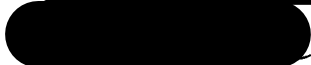
AGREEMENT


DO HEREBY RECOMMEND APPROVAL OF SAME BY THE COUNTY BOARD.

RESPECTFULLY SUBMITTED,
ROAD & BRIDGE COMMITTEE









RESOLUTION

2017-06

BE IT RESOLVED, by the County Board of Shelby County, that the following contracts be awarded as listed below as received at a letting held on January 6, 2017, for Shelby County Section 17-00000-00-GM.

Group 1	River Bend Materials	400 Tons	CA14, CM14, CA15, CM15, CA16, CM16 @ \$9.50/TON – GRAVEL
Group 2	C & H Gravel	200 Tons	CA15, CM15 @ \$9.50/TON – GRAVEL/CR. STONE
Group 3	Brush Creek Quarry	375 Tons	CA14, CM14, CA15, CM15, CA16, CM16 @ \$11.35/TON – CR. STONE
Group 4	NO BID	1100 Tons	CA14, CM14 @ \$0.00/TON – CR. STONE
Group 5	NO BID	250 Tons	CA10, CM10 @ \$0.00/TON – CR. STONE
Group 6	Brush Creek Quarry	500 Tons	CA14, CM14, CA15, CM15 @ \$11.35/TON – CR. STONE
Group 7	Nokomis Quarry	240 Tons	CA14, CM14, CA15, CM15 @ \$14.00/TON – CR. STONE
Group 8	Miller Lime Service	450 Tons	CA14, CM14, CA15, CM15 @ \$19.75/TON – CR. STONE
Group 9	Brush Creek Quarry	300 Tons	CA14, CM14, CA15, CM15 @ \$11.35/TON – GRAVEL/CR. STONE
Group 10	Nokomis Quarry Co.	300 Tons	AGG. SURF CSE TY B, CA-06 @ \$7.50/TON
Group 11	NO BID	350 Tons	AGG. SURF CSE TY B, CA-06 @ \$0.00/TON

STATE OF ILLINOIS)
) SS
COUNTY OF SHELBY)

I, Jessica Fox County Clerk in and for said County in the State aforesaid, and keeper of the records and files thereof, as provided by statute, do hereby certify the foregoing to be a true, perfect, and complete copy of a Resolution adopted by the County Board of Shelby County at its regular meeting held in Shelbyville, Illinois on January 11, 2017.

IN TESTIMONY WHEREOF, I have hereunto set my hand and affixed the seal of said County at my office in Shelbyville in said County this 11th day of January, 2017 A.D.


County Clerk

SHELBY COUNTY HIGHWAY DEPARTMENT ANNUAL REPORT

JANUARY 01, 2016 THRU DECEMBER 31, 2016

Issued January 11, 2017

TABLE OF CONTENTS

- **Summary of Major Achievements**
- **County Highway Department Services**
 - **General Function, Personnel, Engineering & Inspection, Maintenance**
- **Road & Bridge Committee Services**
 - **Function, Voting Members**
- **County Highway Department Funding**
 - **Annual Local & State Funding, State & Federal Controlled Funding, Miscellaneous Funding; Additional Awarded Funding**
- **Photos of Road & Bridge Capital Improvements**
- **Photos of Maintenance Program**
- **Support Services for other Departments**

COUNTY HIGHWAY DEPARTMENT SERVICES

SUMMARY 2016 MAJOR ACHIEVEMENTS

- **Completed (6) Shelby County Capital Improvement Projects**
\$ 3,199,309 in awarded Contracts
 - One County Highway (the Oconee Road) was resurfaced with concrete (\$250K grant helps pay for matching portion of project)
 - One County Highway (the Findlay-Assumption Road) was microsurfaced
 - Four Township Bridges were replaced with new bridges: three in Richland Township and one in Rural Township
 - **Started (1) Shelby County Capital Improvement Projects**
\$988,037 in awarded Contracts
 - One Bridge in City of Shelbyville (Wood Street) was started (Grant pays for 80%)
 - **Responded to approved Township & Village Petitions for drainage structure replacement**
\$114,194 in total construction costs
 - Two Bridge erosion repair Projects were completed: in Flat Branch Township
 - One Bridge structural repair Project was completed: in Shelbyville Township
 - 15 Township and Village drainage structure replacements
 - **Submitted Grant applications for over \$3.5 million in County and Township Improvements:**
 - Federal Access Road Grant -- \$2 million federal funds requested
 - Major Bridge Application (Westervelt Bridge) -- \$1.1 million federal funds requested
 - Railroad crossing Approach Application - \$390,000 federal funds requested
 - **Began Design of Road Improvements to Findlay-Bethany County Highway (estimated cost of \$3 million)**
- Completed 911 sign installations

GENERAL FUNCTION:

The Shelby County Highway Department is dedicated to providing a high quality public service while performing the functions needed for the betterment of the Shelby County Highway System. The Shelby County Highway Department is directly responsible for the maintenance and capital improvements associated with 197.80 county roadway miles (Note: 27th out of 102 counties) and 59 County Highway bridges.

The Shelby County Highway Department, subject to the general supervision and approval of the county board and to the rules and regulations of the Illinois Department of Transportation, generally performs the following functions (ref. 605 ILCS 5/5 Division 2):

- Prepare or cause to be prepared all Plans, Specifications, and Estimates for all Capital Improvement Road & Bridge Projects, approved by the county board.
- Supervise the construction and maintenance of any public road or bridge constructed or maintained in whole or in part at the expense of the county.
- Generate and administer the Shelby County Highway Department Budget, approved by the county board.
- Provide technical and administrative assistance to township Highway Commissioners with regard to approximately 275 township bridges (Note 6th out of 102 Counties)
- Provide technical advice, and construction & maintenance support for township highway commissioners and municipalities, when requested and/or based on approved petitions
- Provide technical and administrative support for the Highway Commissioner's yearly Township Motor Fuel Tax Program (\$2.0 million annual program)

SHELBY COUNTY HIGHWAY DEPARTMENT PERSONNEL:

The Personnel employed by Shelby County to perform the above functions are:

County Engineer: Alan Spesard, P.E.

*** Chief Engineer Assistant:** Keith Petard

*** Engineer Assistants:** Scott Short
Mike Lorton

(1) Open Position (Retirement in 12/2004)

Secretary/Bookkeeper: Danielle Culberson

****Foreman:** Stacy Prosser

****Laborers:** John Agney Charles Evans (Retired in 2016)
Kenneth Vail Shane Kircher
Trevor Blackwell Mike Binnion
Jordon Johnson
(2) Open Positions due to retirements

**** CDL Required**

*** College Degree Required**



ENGINEERING and INSPECTION SERVICES:

- **Capital Improvement Resident Engineering activities for construction projects**
 - One County Highway (the Oconee Road) was resurfaced with concrete (\$250K grant helps pay for matching portion of project)
 - One County Highway (the Findlay-Assumption Road) was microsurfaced
 - Four Township Bridges were replaced with new bridges: three in Richland Township and one in Rural Township
 - One Bridge construction has started: City of Shelbyville – Wood Street bridge
- **Capital Improvement survey, layout, and design activities for engineering projects**
 - Conceptual Designs completed for Grant Submittals: Westervelt Bridge; Federal Access Road; Westervelt railroad crossing
 - County Highway Projects: Oconee Road
 - Continuing design activities on three future railroad crossing approach projects
 - Began Design of Findlay-Bethany road upgrades
- **Miscellaneous Engineering and Inspection Services**
 - Evaluation and Field Inspection of approximately 160 Bridges over eastern portion of County
 - Township Motor Fuel Tax Budget, Bid Document Preparation and Contract Administration for all 24 Townships (over \$2 million in budgeted maintenance work)
 - County Motor Fuel Tax Budget, Bid Document Preparation, and Contract Administration
 - County and Township Culvert procurement administration
 - Sizing of Culverts for 14 approved Municipal & Township 50/50 petitions
 - Ongoing Technical Review, design and Administration of approx. 16 Bridges approved for replacement
 - Hosted 2 educational conferences for Highway Commissioners and Municipal Street Department Heads (approximately 100 in attendance)
 - Technical document preparation for Right-Of-Way Parcels for township bridges and aid in acquisition negotiations
 - Evaluation of Future Road & Bridge Projects

MAINTENANCE SERVICES

- **Maintenance of 198 miles of County Highways and 59 County Bridges**
 - **Maintenance to Highway Surfaces and Shoulders:**
 - Stockpiled and Spread rock for oil/chip seal coating of approximately 20 miles of County Highways.
 - Performed leveling overlay with cold-mix patch mix to over 15 miles of County Highways.
 - Applied Centerline Striping to 62 miles of County Highways.
 - Made 2500 ton of cold-mix at County Yard.
 - Performed shoulder repair with the “Tiger-Claw Retriever” along all County Highways and provided shoulder rock and patch-mix repairs as needed
 - Performed Snow Removal and Cinder Treatment to 198 miles of roadway
 - **Maintenance to Bridges, Culverts, and Ditches:**
 - Installed 15 Drainage Repair Projects at 50% cost share for Municipalities & Townships: Clarksburg, Cold Spring, Ridge, Tower Hill; Flat Branch; Dry Point; Herrick; Big Spring
 - Ditch Cleaning, Mowing, Weed/brush spraying/removal on most County Highways.
 - **Maintenance of Traffic Control Rural Reference Signs**
 - Replace or repaired several hundred rural reference and traffic control signs;
 - **Miscellaneous Maintenance Tasks:**
 - Provided in-house maintenance and repair to 24 County Highway owned vehicles and equipment.
 - Stockpiled sand for snow and ice control
 - Installed numerous field culvert entrances
 - Patching damaged Highway surface areas/holes
 - Delivered Pipe Culverts to 19 Townships and provided culverts for 7 villages (including Cowden, Herrick, Shelbyville, Stewardson, Windsor, Strasburg, Tower Hill, Sigel)
 - Completed installation of 911 addressing signs

ROAD & BRIDGE COMMITTEE

FUNCTION:

The R&B Committee meets a minimum of two times a month. The “Road Trip Committee Meeting” involves site visits across the county to view proposed county road and bridge construction, proposed township & municipality petition work, ongoing construction projects, and maintenance and insurance work. The “Claim Review Meeting” involves a review of county and township claims for compliance with that budgeted and a review of proposed petitions, resolutions and agreements. Occasionally the R&B committee have “Random Committee Meetings” in order to observe local lettings for bridges, roads, and maintenance contracts; review land acquisition document and appraisals for construction projects, and observe county hosted township highway commissioner educational conferences and/or other information meetings.

ROAD & BRIDGE COMMITTEE VOTING MEMBERS:

The 2016 Road & Bridge (R&B) Committee consisted of four county board members appointed by the county board chairman:

Chairman:	Dave Cruitt,	District No. 10
Committee Members:	Bruce Cannon,	District No. 2
	Jesse Durbin,	District No. 9
	Larry Lenz,	District No. 9



KEY DECISIONS OF R&B COMMITTEE:

- Prioritized Bridge Replacement Projects: Windsor, Richland, Rural were approved for engineering
- Selected Bridges to be replaced with Pipe/Tank Cars
- Selection of Road Improvement Projects: Findlay-Bethany Road was approved
- Prioritizing of Roads and Bridges for Grant Submittals

COUNTY HIGHWAY DEPARTMENT FUNDING

ANNUAL LOCAL TAX & STATE MFT FUNDING

Shelby County receives local property tax funds and State motor fuel tax (MFT) funds. These funds are considered "Special Revenue Funds" due to the fact that they are legally restricted for expenditures for use by the Shelby County Highway Department for the construction and maintenance of Highways. The local tax revenues and expenditures are internally controlled by the County Bridge, County Highway, and Federal Aid Secondary accounts. The state motor fuel tax revenues and expenditures are internally controlled by the County Motor Fuel Tax and Township Motor Fuel Tax accounts. The expenditures and revenues associated with these funds are audited annually by the Shelby County contracted auditing firm of "Mose, Yockey, Brown & Kull, LLC (MY&K)". In addition to the audit performed by MY&K, the State & Township MFT expenditures and revenues are audited annually by the Illinois Department of Transportation.

Details associated with these revenues and expenditures for the current Fiscal Year ending in August 31, 2016 will be published by MY&K in a report entitled "AUDITED FINANCIAL STATEMENTS AND SUPPLEMENTAL INFORMATION" in the spring of 2017.

STATE & FEDERAL CONTROLLED FUNDING

The IDOT committed State and Federal Funding for Shelby County Capital Improvement Projects as follows:

- Total Federal, State and local Construction Funds for Bridge & Road Projects = \$4,187,346
- Federal Bridge and Road Funds totaling approximately \$3,349,876 toward 80 % of the awarded contract construction and engineering costs for township and County bridges.
- State Bridge and Road Funds totaling approximately \$675,000 toward the awarded contract construction & construction engineering costs for township bridges construction

These funds are administered and controlled by the IDOT and ICC.

MISCELLANEOUS FUNDING

The Shelby County Highway Department miscellaneous funding as follows:

- Engineering fees from the \$2.0 million Township Motor Fuel Tax Program, totaling approximately \$80,000 for technical and contract administration services
- Maintenance expense reimbursement totaling approximately \$57,097 for approved requests and petitions from townships and villages.

ROAD & BRIDGE CAPITAL IMPROVEMENTS



Existing Road Surface



New Road Surface

Resurface Oconee County Highway
Awarded Construction Contract = \$1,606,666



Existing Road Surface



New Road Surface

Microsurface – Findlay/Assumption Road

Awarded Construction Contract = \$144,317

ROAD & BRIDGE CAPITAL IMPROVEMENTS



Existing Bridge



New Bridge

Richland Township Bridge Replacement (Closed Bridge)

- Location: 2.5 miles NW of Village of Strasburg
- Awarded Construction Contract: \$247,050



Existing Bridge



New Bridge

Rural Township Bridge Replacement (Posted 13 Ton)

- Location: 7 miles NW of Village of Tower Hill
- Awarded Construction Contract: \$545,788

ROAD & BRIDGE CAPITAL IMPROVEMENTS



Wood Street Bridge Replacement in City of Shelbyville under Construction (Closed Bridge)

- Location: City of Shelbyville
- Awarded Construction Contract: \$988,037



Richland Township Bridge Replacement (2 Closed Bridges)

- Location: 3 miles West of Strasburg
- Awarded Construction Contract: \$655,488

MAINTENANCE OF COUNTY HIGHWAYS



Herrick-51 Road



Tower Hill – Herrick Road

Ditch Cleaning



Crack Sealing Findlay/Assumption County Highway



Repair Findlay Bridge

MAINTENANCE OF COUNTY HIGHWAYS



Make Cold Mix for County and Townships



Recycle Damaged Signs



Existing Structure



New Pipe

Replace box culvert on Herrick-51 County Highway
Insurance Claim – 100% funded

MAINTENANCE OF COUNTY HIGHWAYS



Edge Repair – Moweagua County Highway



Mowing – Westervelt County Highway



Cold-Mix Overlay – Findlay/Bethany and Vandalia County Highways

AID TO TOWNSHIPS AND MUNICIPALITIES



Existing Flood Damage



Repaired Bridge

Bridge Repair in Flat Branch Township

Total Cost = \$15,920



Bridge Repair in Shelbyville Township

Total Cost = \$18,624

AID TO TOWNSHIPS AND MUNICIPALITIES



Existing Pipe



New Pipe

Drainage Structure Replacement in Herrick Township on the County Line

Total Cost = \$4,982



Existing Pipe



New Pipe

Drainage Structure Replacement in Big Spring Township

Total Cost = \$2,493

AID TO TOWNSHIPS AND MUNICIPALITIES



Existing Pipe



New Pipe

Drainage Structure Replacement on Tower Hill/Cold Spring Township Line

Total Cost = \$15,491



Existing Structure



New Pipe Culvert

Drainage Structure Replacement in Ridge Township

Total Cost = \$5,420

AID TO TOWNSHIPS AND MUNICIPALITIES



Existing Structure



New Pipe Culvert

Drainage Structure Replacement in Dry Point Township

Total Cost = \$19,464



Existing Structure



New Pipe Culvert

Drainage Structure Replacement in Clarksburg Township

Total Cost = \$4,956

SUPPORT SERVICES FOR OTHER DEPARTMENTS

Other Support Services for County Departments:



Courthouse Parking Lot Repair



Tire Collection

- Courthouse: Transporting/Disposing documents;
- Courthouse Parking Lot Repair
- Completed 911 sign installations
- Hosted Tire Collection
- Assisted with Balloon Festival
- Animal Control Dept.: Burial of dogs

**Road & Bridge Committee
Meeting Minutes
December 9th, 2016**

- **Roll Call: Dave Cruitt, Bruce Cannon, Jesse Durbin, Larry Lenz**
 - Also in attendance: Alan Spesard, County Engineer
 - **Road Trip to view upcoming and ongoing projects:**
 - Railroad Crossing approach project to be bid in Rural Township
 - Rural Bridge completed and opened to traffic
 - Ocone Road Completed Construction
 - Two petitions in Cold Spring Township for drainage structure replacement
 - Wood Street Bridge construction progress
- **Adjournment: Next meetings scheduled for December 12th 2016**

**Road & Bridge Committee
Meeting Minutes
December 12, 2016**

- **Roll Call: Dave Cruitt, Bruce Cannon, Jesse Durbin, Larry Lenz**
 - Also in attendance: Alan Spesard, County Engineer
- **Approval of Last Month's Minutes**
 - **Committee recommended approval**
- **Review Claims**
 - **Committee recommended approval**
- **Review County Highway Finances**
- **New Business:**
 - Petition from Cold Spring highway Commissioner for 50/50 drainage structure replacement
 - Committee recommended approval
 - Petition from Cold Spring Highway Commissioner for 50/50 drainage structure replacement
 - Committee recommended approval
 - Resolution for using MFT to maintain County Highways
 - Committee recommended approval
 - Resolution for reimbursement of ½ County Engineer Salary
 - Committee recommended approval
 - Agreement with The Upchurch Group for design services to replace Rural Township Bridge
 - Committee recommended approval
 - Agreement with Rhutasel and Associates for design services to replace Richland Township Bridge
 - Committee recommended approval
 - Agreement with Hampton, Renzini and Lenwick for design services to replace Windsor Township Bridge
 - Committee recommended approval
 - Water over the road policy. Some are assuming signs need to be in place before enforcement is allowed
 - Grant submitted for road improvements accessing Lake Shelbyville. Have letters of support from Shelby County, Shelbyville, USACE and Congressman Shimkus. Cost estimate \$2.7 million Phase 1 and \$1.1 million Phase 2
 - Need updated equipment replacement schedule
 - Trying to hire Laborer. – Top choice found another job and next choice turned down the job
 - Will try again in the Spring
 - IDOT requesting we agree to maintain sideroads to US 45
 - Committee agreed to decline to sign agreement
 - Ameren is requesting signed release for road damage from their truck traffic during construction – No damage found by Alan
 - Thankyou letter from Buford Webb
 - Cowden may request to intersection at Locust Street
 - Will get estimates of project costs
 - Received first installment of \$39K for reimbursement of 911 sign replacement costs

Road & Bridge Committee

Meeting Minutes

December 12, 2016

- IDOT has approved plan to resurface Findlay-Bethany road in FY 2019. Will submit grant for TARP to help with matching dollars of 20%
- Frontier Communication is having debt collector call for reimbursement damages to cable when we installed a pipe culvert
 - Committee agreed to not pay this invoice
- Railroad crossing approach in Rural Township trying to be bid in February.
- Culvert and Rock Bid letting on January 6th
- Annual Report to be presented at January 11th County Board meeting
- **Old Business:**
 - ADA Sidewalk Inventory has been completed need to draft a Transition Plan
 - Tire collection approved by EPA for this fall
 - Quality Based Selection of Engineering firms funded with federal funds is a new law
- **Adjournment:** Next meetings scheduled for January 6th and 9th

DATE: 1-9-17

WE, THE MEMBERS OF THE ROAD AND BRIDGE COMMITTEE HAVING
EXAMINED THE FOLLOWING DO HEREBY RECOMMEND APPROVAL OF
SAME BY THE COUNTY BOARD.

CPCA
COUNTY BRIDGE FUND
COUNTY HIGHWAY FUND
COUNTY MOTOR FUEL TAX FUND
FAS MATCHING FUND
LOCAL BRIDGE FUND
TWP. BR. SUPR. ENGR. FUND
TWP. CONSTRUCTION FUND
TWP. MOTOR FUEL TAX FUND

RESPECTFULLY SUBMITTED,
ROAD & BRIDGE COMMITTEE

[REDACTED]
[REDACTED]
[REDACTED]
[REDACTED]

HIGHWAY PAYROLL ACCOUNTDATE: December 30, 2016

NAME	REG. HRS.	REG. HR. RATE	OVER T.	OVER T. RATE	REG. PAY	O.T. PAY	TOTAL PAY
464 S. Alan Spesard							3957.70
16 D. Culberson		18.57		27.86	1299.90		1299.90
244-5010 K. Petard		25.62		38.43	2049.60		2049.60
386-5014 S. Short		24.77		37.16	1981.60		1981.60
172-5014 M. Lorton		21.51		32.27	1720.80		1720.80
188-5013 S. Prosser		24.88	9 ✓	37.32	1990.40	335.88	2326.28
102-5031 J. Agney		22.87	7 ✓	34.31	1829.60	240.14	2069.74
226-5031 K. Vail		19.31	7 ✓	28.97	1544.80	202.76	1747.56
58-5031 S. Kircher		13.84	9 1/2 ✓	20.76	1107.20	197.22	1304.42
123-5031 T. Blackwell		13.12	7 ✓	19.68	1049.60	137.76	1187.36
501-5031 M. Binnion		13.12	7 ✓	19.68	1049.60	137.76	1187.36
502-5031 J. Johnston		13.12	7 ✓	19.68	1049.60	137.76	1187.36
Co. MFT		3957.70					
Co. Hwy.		12 309.98					
Twp. Br. Sup.		5752					

AS

HIGHWAY PAYROLL ACCOUNTDATE: December 16, 2011

NAME	REG. HRS.	REG. HR. RATE	OVER T.	OVER T. RATE	REG. PAY	O.T. PAY	TOTAL PAY
464 S. Alan Spesard							3957.70
16 D. Culberson		18.57		27.86	1299.90		1299.90
244-5010 K. Petard		25.62		38.43	2049.60		2049.60
386-5014 S. Short		24.77		37.16	1981.60		1981.60
172-5014 M. Lorton		21.51		32.27	1720.80		1720.80
188-5013 S. Prosser		24.88		37.32	1990.40		1990.40
102-5031 J. Agney		22.87		34.31	1829.60		1829.60
226-5031 K. Vail		19.31		28.97	1544.80		1544.80
58-5031 S. Kircher		13.84		20.76	1107.20		1107.20
123-5031 T. Blackwell		13.12		19.68	1049.60		1049.60
501-5031 M. Binnion		13.12		19.68	1049.60		1049.60
502-5031 J. Johnston		13.12		19.68	1049.60		1049.60
Co. MFT		3957.70					
Co. Hwy.		10920.70					
Twp. Br. Sup.		5752-					

AS

January 4, 2017

NOTICE OF BUDGET COMMITTEE MEETING

There will be a Budget Committee meeting on Thursday January 19, 2017 at 9:00 AM. This meeting will be held in Courtroom B of the Shelby County Courthouse. The agenda for this meeting is as follows:

1. David Pistorius Senior VP First Midstate Inc. – Bonds for Courthouse Repairs
2. 90 day budget review – please review reports prior to meeting, discussion if necessary
3. New Business – discussion only, no action to be taken
4. Old Business(if any) – discussion only, no action to be taken

Respectfully,

Jessica Fox
Shelby Co. Clerk & Recorder

Shelby County Zoning Year End Review

			<u>2016</u>		<u>2015</u>
Total Permits:			86		82
	New Residence		26		25
	Modular Home		2		5
	Mobile Home		7		8
	Residential Addition		5		8
	Accessory Building		35		33
	Grain Bin		8		1
	Spec. Exception		0		0
	Wind Turbine		0		1
	New Commercial		0		0
	Commercial Accessory		2		1
	Commercial Addition		0		0
	Church		0		0
	Communication Tower		0		0
	Billboard		1		
	Total Fees	\$	7,975.00		\$ 8,900.00
	Total Fee Waivers		38		27
	Total Est. Value	\$	6,106,500.00		\$ 5,594,565.00

**COUNTY BOARD COMMITTEES
2017-2018**

FEES & SALARIES:

Barbara Bennett
Kay Kearney
Frank Mulholland

PURCHASING:

Don Strohl
Terry Metzger
Gary Gergeni
Jim Arthur
Lynn Williams
Kenneth Barr
Joe Woodall

COUNTY FARM:

Robert Jordan
Jesse Durbin
Bryon Coffman

FINANCE:

Bruce Cannon
Gary Gergeni
Larry Lenz
Don Strohl
Rob Amling

ANIMAL CONTROL:

Robert Jordan
Kay Kearney
Terry Metzger

ROAD & BRIDGE:

Dave Cruitt
Bruce Cannon
Larry Lenz
Jesse Durbin

COUNTY PUBLIC HEALTH:

Kenneth Barr
Lynn Williams
Jesse Durbin
Richard Hayden
Jim Arthur

EMA:

Frank Mulholland
Richard Hayden
Robert Behl

LAW ENFORCEMENT:

Kay Kearney
Robert Simpson
Richard Hayden

ZONING:

Robert Simpson
Joe Woodall
Dennis Drnjevic

AIRPORT:

Bruce Cannon
Robert Jordan
Robert Simpson

PUBLIC BUILDINGS:

Dale Wetherell
Jim Arthur
Kenneth Barr
Gary Gergeni
Frank Mulholland

MISCELLANEOUS/AMBULANCE:

Frank Mulholland
Dale Wetherell
Joe Woodall
Bryon Coffman
Dennis Drnjevic

LIQUOR:

Board Chairman
Rob Amling
Don Strohl

LEGISLATIVE:

Robert Amling
Barbara Bennett
Gary Gergeni
Dennis Drnjevic
Bryon Coffman

PUBLIC AID:

Board Chairman
Lynn Williams (D)
Larry Lenz (R)
Dennis Drnjevic (D)
Don Strohl (R)

INSURANCE RISK MGMT:

Barbara Bennett
Bryon Coffman
Terry Metzger
Kay Kearney

SOFTWARE LIAISON:

Barbara Bennett

BUDGET:

Board Chairman
Bruce Cannon
Rob Amling
Barbara Bennett
Kay Kearney
Larry Lenz
Gary Gergeni
Don Strohl
Frank Mulholland

Effective 01/2017

Co. Health Comm.

10:00 AM

All Bills were read & approved

10:30 AM

[REDACTED]

FILED
JAN 10 2017
Jerrin Fox
SHERY COUNTY CLERK

Law Enforcement Committee
Meeting Agenda January 5th 2017

1. 911 update. Radio equipment moved from Buffet Tower to Corp Tower.
2. Mandatory Training and it's impact on the Budget.
3. 2016 Sheriff's office Stats. (October, November and December)
4. Inspection and approval of expenditures

FILED
JAN 05 2017
Jessica Fox
SHELBY COUNTY CLERK

SHELBY COUNTY AIRPORT and LANDING FIELD COMMISSION TREASURER'S REPORT November 30, 2016

Beginning Balance Deposits

	November 1, 2016	
Heartland Payment Systems--Credit Card Fuel Sales	\$	15,896.88
Fuel Sales--Cash & Check	\$	1,286.65
Rent	\$	557.68
Transfer To Shelby County State Bank	\$	1,390.00
Bank Interest	\$	741.96
	\$	1.12
	\$	3,977.41
	\$	19,874.29

Bills Received and Paid

Consolidated Communications	\$	226.84	
Heartland Payment Systems--Fees	\$	119.70	
Shelby County Aviation--FBO November, 2016	\$	3,500.00	
City Area Water/Sewer Department	\$	49.69	
Shelby Electric Cooperative	\$	768.49	
Shelby County State Bank--Deposit Slips	\$	35.72	
Ameren Illinois	\$	141.31	
Shelby County Aviation--Equipment Maintenance	\$	43.04	
Shelby County Aviation--Wal-Mart/Supplies	\$	25.45	
Steve Wempen--Bookkeeping November 2016	\$	200.00	
Shelbyville Ace Hardware--Misc. Supplies	\$	83.53	
	\$	5,400.27	
	\$	14,680.52	

Shelby County State Bank
Busey Bank
Farm Agency Account
Gas Receivable
Rent Receivable
Cash On Hand
Certificates of Deposit

FILED
DEC 28 2016

Total

\$	14,680.52
\$	161.76
\$	27,807.13
\$	1,314.25
\$	1,570.00
\$	862.78
\$	45,103.20
\$	91,499.64

Prepared by Steve Wempen--Sec/Treas

Steve Wempen
SHELBY COUNTY CLERK

SHELBY COUNTY AIRPORT and LANDING FIELD COMMISSION

MINUTES OF MEETING

November 7, 2016

Members present at meeting:

Commissioners--Steve Wempen, John Hall, Walt Lookofsky, Jeff Green
County Board Members--Bruce Cannon, Bob Simpson
Airport Manager--Scott Jefson
Others Present--

Commissioner Jeff Green calls the meeting to order.

The minutes were read by all. Jeff makes a motion to approve the minutes.
It was seconded by Walt and was approved by all saying aye.

The Treasurer's report was read by all. Walt makes a motion to approve the Treasurers Report. It was seconded by Steve and approved by all saying aye.

Bills Presented

A Shelbyville Ace Hardware--Misc. Supplies	\$	83.53
Shelby County Aviation--Pro-Lube, Birkey's/ Equipment Maintenance	\$	43.04
Shelby County Aviation--Wal-Mart/Office Supplies	\$	25.45

Jeff makes a motion to pay said bills and was seconded by Bruce and approved by all saying aye.

Managers Report

Balloon Fest was a Major success. It's estimated that 5500 - 6000 people attended.
The helicopter had to be shut down at ten o'clock. They had flown 140 people and are planning to come back next year with two helicopters. There were thirty plus people still in line waiting for a ride.
They charged \$30 per person and \$5 of that was for the airport manager for all his help. Scott informed the Commission that he was donating the money back to the airport to be used for painting the ceiling in the Main Hangar.
Attended the TIPS meeting the following week. The airport inspection was the main topic and they threaten to hold all funds till the runway markers were corrected and taxiway lights replaced. After a lengthy discussion, Scott was able to convince IDOT and The FAA that replacing the lights would only lead to another damaged aircraft issue. They decided to allow us to leave the lights out for now and to issue a NOTAM about the taxiway lighting until they come up with a solution. Also stating this would be a priority. Austin Pritchard came out and gave us a quote for putting in four LED lights on our sign out front. The lights would be mounted at the top and shine downward.
Construction people were out to remeasure for concrete, electrical and such, and once started they should complete it in three days and be ready to place the tank.
Still have the mowers going and both mowers are needing new blades.
John ask about the helicopter for out front and Scott mentions getting a questionnaire to fill out and that there were a few questions he was unsure of how to answer. Questions like how much we are willing too spend on getting the aircraft ready to ship and the cost of shipping it.
Basically saying that all cost incurred are the responsibility of the requester. Besides the cost involved the airport would also be required to comply to all other requirements of the government.
They also suggested calling the department of the Air force and listed a phone number for them. Scott mentions calling them the following day.

End of Managers Report

Old Business

Getting Philips 66 Branded was mentioned and needs to be followed up on to see when it's going to happen.

Jeff makes a motion the close and it was seconded by John.

SHELBY COUNTY AIRPORT AND LANDING FIELD COMMISSION RECORD JOURNAL

CHECK NO.	DESCRIPTION OF TRANSACTION	BUDGET ACCT NOS.	DEBITS	CREDITS	BALANCE
31-Oct-16	Balance Shelby County State Bank				\$ 15,896.88
1-Nov-16	Heartland Payment Systems--Fees		\$ 119.70		\$ 15,777.18
2-Nov-16	Heartland Payment Systems--Deposit			\$ 69.64	\$ 15,846.82
3-Nov-16	Shelby County Aviation--FBO November 2016	022-5210-12-023	\$ 3,500.00		\$ 12,346.82
4-Nov-16	Heartland Payment Systems--Deposit			\$ 16.64	\$ 12,363.46
5-Nov-16	Shelby Electric Cooperative	022-7800-12-023	\$ 768.49		\$ 11,594.97
5-Nov-16	City Area Water-Sewer Department	022-7800-12-023	\$ 49.69		\$ 11,545.28
7-Nov-16	Heartland Payment Systems--Deposit			\$ 432.97	\$ 11,978.25
8-Nov-16	Heartland Payment Systems--Deposit			\$ 134.55	\$ 12,112.80
10-Nov-16	Heartland Payment Systems--Deposit			\$ 49.57	\$ 12,162.37
14-Nov-16	Heartland Payment Systems--Deposit			\$ 158.61	\$ 12,320.98
15-Nov-16	SCSB--Deposit Slips				
15-Nov-16	Heartland Payment Systems--Deposit	022-7000-12-023	\$ 35.72		\$ 12,285.26
17-Nov-16	Heartland Payment Systems--Deposit			\$ 161.21	\$ 12,446.47
18-Nov-16	Heartland Payment Systems--Deposit			\$ 1.10	\$ 12,447.57
5223	Consolidated Communications	022-7800-12-023	\$ 226.84	\$ 81.32	\$ 12,528.89
5224	Shelby County Aviation--Equipment Maintenance	022-7441-12-023	\$ 43.04		\$ 12,259.01
5225	Shelby Coutny Aviation--Wal-Mart Supplies	022-7000-12-023	\$ 25.45		\$ 12,233.56
5226	Shelbyville Ace Hardware--Equipment Maintenance	022-7441-12-023	\$ 83.53		\$ 12,150.03
21-Nov-16	Heartland Payment Systems--Deposit			\$ 31.30	\$ 12,181.33
23-Nov-16	Heartland Payment Systems--Deposit			\$ 82.99	\$ 12,264.32
25-Nov-16	Heartland Payment Systems--Deposit			\$ 16.77	\$ 12,281.09
28-Nov-16	Heartland Payment Systems--Deposit			\$ 49.98	\$ 12,331.07
5227	Steve Wempen--Bookkeeping November 2016	022-5220-12-023	\$ 200.00		\$ 12,131.07
30-Nov-16	Transfer to SCSB			\$ 741.96	\$ 12,873.03
30-Nov-16	Rent--A Krause \$170, B Bachman \$85, B Howie \$170				
	J Livesay \$95, B Brunken \$85, J Green \$85				
	D Beyers \$190, M Figgins \$340, C Jessie \$170				
	Fuel--\$557.68 Rent--\$1390.00				
5228	Ameren Illinois--SCA-37525 \$43.62, 06211 \$97.69	022-7800-12-023	\$ 141.31	\$ 1,947.68	\$ 14,820.71
	Bank Interest			\$ 1.12	\$ 14,679.40
	Board Meeting--December 12, 2016				\$ 14,680.52

[illegible]

SHELBY COUNTY AIRPORT---CERTIFICATES of DEPOSIT									
ISSUEING FACILITY	ACCT. NO.	OPG. DATE	AMOUNT	APY RATE	MAT. TERM	NEXT MAT.	BALANCE		
SHELBY COUNTY STATE BANK	4485	11-May-84	\$ 10,000.00	0.65	182 Days	8-Apr-11	Closed		
SHELBY COUNTY STATE BANK	5280	14-May-85	\$ 10,000.00	0.65	182 Days	12-Apr-11	Closed		
SHELBY COUNTY STATE BANK	18512	15-Feb-06	\$ 20,000.00	0.25	365	15-Feb-17	\$ 23,765.55		
SHELBY COUNTY STATE BANK - MOWEAQUA	5100001126	20-Nov-08	\$ 20,226.22	0.65	182 Days	20-May-11	Closed		
SHELBY COUNTY STATE BANK - MOWEAQUA	5100001127	20-Nov-08	\$ 20,000.00	0.65	182 Days	20-May-11	Closed		
BUSEY BANK	125662	15-Feb-06	\$ 20,000.00	NA	1 Year	15-Feb-12	Closed		
BUSEY BANK	3340077	19-Nov-08	\$ 20,000.00	NA	1 Year	19-Nov-17	\$ 21,337.65		
BUSEY BANK	3340117	19-Nov-08	\$ 20,000.00	NA	7 Months	19-Apr-15	Closed		
						Total	\$ 45,103.20		

ISSUEING FACILITY	ACCT. NO.	OPG. DATE	AMOUNT	APY RATE	MAT. TERM	NEXT MAT.	BALANCE
SHELBY COUNTY STATE BANK	4485	11-May-84	\$ 10,000.00	0.65	182 Days	8-Apr-11	Closed
SHELBY COUNTY STATE BANK	5280	14-May-85	\$ 10,000.00	0.65	182 Days	12-Apr-11	Closed
SHELBY COUNTY STATE BANK	18512	15-Feb-06	\$ 20,000.00	0.25	365	15-Feb-17	\$ 23,765.55
SHELBY COUNTY STATE BANK - MOWEAQUA	5100001126	20-Nov-08	\$ 20,226.22	0.65	182 Days	20-May-11	Closed
SHELBY COUNTY STATE BANK - MOWEAQUA	5100001127	20-Nov-08	\$ 20,000.00	0.65	182 Days	20-May-11	Closed
BUSEY BANK	125662	15-Feb-06	\$ 20,000.00	NA	1 Year	15-Feb-12	Closed
BUSEY BANK	3340077	19-Nov-08	\$ 20,000.00	NA	1 Year	19-Nov-17	\$ 21,337.65
BUSEY BANK	3340117	19-Nov-08	\$ 20,000.00	NA	7 Months	19-Apr-15	Closed
Total							\$ 45,103.20

November 30, 2016

Total Monthly Expenses

Snelby County Airport and Landing Field Commission

Fuel Sales

November, 2016

DATE	QUANTITY	CUSTOMER INVOICE	PRICE	CREDIT CD	CHARGE	CASH
2-Nov-16	3.03	Credit Card Customer	2158	\$ 4.07	\$ 12.33	
2-Nov-16	42.22	Scott Jefson	2159	\$ 4.02	\$ 169.72	
2-Nov-16	1.55	Credit Card Customer	2160	\$ 4.07	\$ 6.31	
4-Nov-16	8.56	Credit Card Customer	2161	\$ 4.07	\$ 34.84	
4-Nov-16	10.11	Credit Card Customer	2162	\$ 4.07	\$ 41.15	
4-Nov-16	6.11	Credit Card Customer	2163	\$ 4.07	\$ 24.87	
4-Nov-16	16.07	Credit Card Customer	2164	\$ 4.07	\$ 65.40	
4-Nov-16	2.00	Cash Customer	2165	\$ 4.07		\$ 8.14
5-Nov-16	7.29	Matt Figgins	2166	\$ 4.02	\$ 29.31	
5-Nov-16	30.11	Credit Card Customer	2167	\$ 4.07	\$ 122.55	
5-Nov-16	3.12	Credit Card Customer	2168	\$ 4.07	\$ 12.70	
5-Nov-16	5.12	Credit Card Customer	2169	\$ 4.02	\$ 20.84	
5-Nov-16	27.18	Credit Card Customer	2170	\$ 4.07	\$ 110.62	
6-Nov-16	7.23	Barry Brunken	2171	\$ 4.02	\$ 29.06	
6-Nov-16	12.55	Credit Card Customer	2173	\$ 4.07	\$ 51.08	
6-Nov-16	11.18	Credit Card Customer	2174	\$ 4.07	\$ 45.50	
6-Nov-16	9.33	Credit Card Customer	2176	\$ 4.07	\$ 37.97	
7-Nov-16	17.73	Scott Jefson	2177	\$ 4.02	\$ 71.27	
8-Nov-16	11.06	Cash Customer	2180	\$ 4.07		\$ 45.01
8-Nov-16	5.12	Credit Card Customer	2181	\$ 4.07	\$ 20.84	
8-Nov-16	7.06	Credit Card Customer	2182	\$ 4.07	\$ 28.73	
9-Nov-16	26.18	Rick Brown	2183	\$ 4.02	\$ 105.24	
10-Nov-16	13.05	Cash Customer	2184	\$ 4.07		\$ 53.11
11-Nov-16	2.10	Credit Card Customer	2185	\$ 4.07	\$ 8.55	
11-Nov-16	3.12	Credit Card Customer	2186	\$ 4.07	\$ 12.70	
12-Nov-16	48.67	John Livesay	2188	\$ 4.02	\$ 195.65	
12-Nov-16	10.00	Credit Card Customer	2189	\$ 4.07	\$ 40.70	
12-Nov-16	12.04	Matt Figgins	2190	\$ 4.02	\$ 48.40	
12-Nov-16	16.14	Credit Card Customer	2191	\$ 4.07	\$ 65.69	
12-Nov-16	7.61	Credit Card Customer	2192	\$ 4.07	\$ 30.97	
13-Nov-16	19.46	Credit Card Customer	2193	\$ 4.07	\$ 79.20	
13-Nov-16	6.01	Credit Card Customer	2194	\$ 4.07	\$ 24.46	
13-Nov-16	10.12	Credit Card Customer	2195	\$ 4.07	\$ 41.19	
13-Nov-16	4.02	Credit Card Customer	2196	\$ 4.07	\$ 16.36	
14-Nov-16	7.37	Cash Customer	2198	\$ 4.07		\$ 30.00
15-Nov-16	0.27	Credit Card Customer	2199	\$ 4.07	\$ 1.10	
16-Nov-16	9.85	Credit Card Customer	2200	\$ 4.07	\$ 40.09	
16-Nov-16	6.23	Rick Brown	2201	\$ 4.02	\$ 25.04	
16-Nov-16	4.11	Credit Card Customer	2203	\$ 4.07	\$ 16.73	
16-Nov-16	6.02	Credit Card Customer	2204	\$ 4.07	\$ 24.50	
16-Nov-16	4.99	Barry Brunken	2205	\$ 4.02	\$ 20.06	
17-Nov-16	4.92	Cash Customer	2206	\$ 4.07		\$ 20.02
17-Nov-16	0.01	Credit Card Customer	2207	\$ 4.07	\$ 0.04	
17-Nov-16	2.57	Credit Card Customer	2208	\$ 4.07	\$ 10.46	
17-Nov-16	3.20	Cash Customer	2209	\$ 4.07		\$ 13.02
17-Nov-16	25.03	Jeff Green	2210	\$ 4.02	\$ 100.62	
17-Nov-16	5.11	Credit Card Customer	2211	\$ 4.07	\$ 20.80	
21-Nov-16	20.39	Credit Card Customer	2212	\$ 4.07	\$ 82.99	
22-Nov-16	5.03	Cash Customer	2213	\$ 4.07		\$ 20.47
22-Nov-16	4.12	Credit Card Customer	2214	\$ 4.07	\$ 16.77	
24-Nov-16	2.10	Credit Card Customer	2215	\$ 4.07	\$ 8.55	
25-Nov-16	5.12	Credit Card Customer	2216	\$ 4.07	\$ 20.84	
26-Nov-16	5.06	Credit Card Customer	2217	\$ 4.07	\$ 20.59	
26-Nov-16	7.13	Barry Brunken	2218	\$ 4.02	\$ 28.66	
29-Nov-16	20.01	John Livesay	2219	\$ 4.02	\$ 80.44	
30-Nov-16	56.52	Credit Card Customer	2220	\$ 4.07	\$ 230.04	
30-Nov-16	21.36	Credit Card Customer	2221	\$ 4.07	\$ 86.94	
TOTAL	648.77			\$ 1,535.99	\$ 903.47	\$ 189.77
		TOTAL				\$ 2,629.23

Animal Control

December 28, 2016

Reviewed and approved bills

Dog Wash - November = \$405⁰⁰

Total for Year = \$4,426.25

Discussion on attendance at a training in Indianapolis regarding the darting of animals. It is a more expensive training and the committee is unsure how to budget this for the next budget year. Kay will check with Budget Committee.

FILED

DEC 28 2016

Jessica Fox
SHELBY COUNTY CLERK

Dec. 21, 2016

Public Buildings

Present 9:00 AM

Sheriff Konce
Gary G
Dave Cruitt
Jim Arthur
Frank M
Kenny Barr
Dale W

EFI Global CHUB
Joe Kraus
Structural Engineer
Addison IL
office 800-693-2085
cell 314-910-1914

1/11th/17 Co. Board meeting

Bill Utz - Tardy 9:30 AM

Information @ Reg. Bd. Meeting c Bill Utz
Hope to Vote on Feb Meeting

Frank^m motion to Adjourn, Jim A 2nd Passed
9:56

FILED
DEC 21 2016

Jessica Tox
SHELBY COUNTY CLERK

Shelby County Courthouse Exterior Renovation

Shelbyville, Illinois

December 21, 2016

F I L E D
DEC 21 2016

James Fox
SHELBY COUNTY CLERK



Ute & Associates
Architects PC

13878 North 1400th St.
Edinburg, IL 62401

Description	Bid Price	Contingency 15%	Subtotal	Total Base Bid	Alternate #1	Alternate #2
Base Bid						
CertainTeed Landmark Pro Asphalt Shingles	\$ 238,250.00	\$ 35,737.50	\$ 273,987.50	\$ 273,987.50		
Low Slope Roof - 60 mil. TPO Roof - 20 yr. Warranty w/ Hatches (72 mph)						
Alternate #1						
Metal Shingles - Tanko Metal Works - 50 Yr. Warranty - Class F (110mph)	\$ 262,095.00	\$ 39,314.25	\$ 301,409.25	\$ 301,409.25		
Low Slope Roof - 60 mil. TPO Roof - 20 yr. Warranty w/ Hatches (72 mph)						
Alternate #2						
Rubber Shingles - Majestic Slate Shingles - 50 Yr. Warranty - Class F (110 mph)	\$ 418,771.25	\$ 62,815.69	\$ 481,586.94		\$ 481,586.94	
Copper Flashing						
Low Slope Roof - 60 mil. TPO Roof - 20 yr. Warranty w/ Hatches (72 mph)						
Scaffolding for Upper Tower	\$ 58,000.00	\$ 8,700.00	\$ 66,700.00	\$ 66,700.00	\$ 66,700.00	\$ 66,700.00
Downspouts						
Remove and Install New Larger Downspouts	\$ 25,000.00	\$ 3,750.00	\$ 28,750.00	\$ 28,750.00	\$ 28,750.00	\$ 28,750.00
Lightning Protection						
Remove, Repair and Re-Install Lightning Protection	\$ 25,000.00	\$ 3,750.00	\$ 28,750.00	\$ 28,750.00	\$ 28,750.00	\$ 28,750.00
Window and Doors						
Window and Door Replacement - Marvin	\$ 397,884.00	\$ 161,047.80	\$ 1,234,699.80	\$ 1,234,699.80	\$ 1,234,699.80	\$ 1,234,699.80
Asbestos Abatement						
Metal Fabrication						
Cornices, Copings and Column Surrounds	\$ 286,865.00	\$ 70,029.75	\$ 536,894.75	\$ 536,894.75	\$ 536,894.75	\$ 536,894.75
Miscellaneous Framing						
Treated Wood Framing	\$ 45,000.00	\$ 6,750.00	\$ 51,750.00	\$ 51,750.00	\$ 51,750.00	\$ 51,750.00
Dentils						
Fypson Dentils	\$ 130,000.00	\$ 19,500.00	\$ 149,500.00	\$ 149,500.00	\$ 149,500.00	\$ 149,500.00
Masonry Repair, Waterproofing, Repair at Stairs						
Masonry Repair, Waterproofing, Repair at Stairs	\$ 66,490.00	\$ 9,973.50	\$ 76,463.50	\$ 76,463.50	\$ 76,463.50	\$ 76,463.50
Architectural / Engineering Fees - Estimate						
Environmental Engineering - Asbestos				\$ 2,447,495.55	\$ 2,474,917.30	\$ 2,655,094.99
Structural Analysis for Scaffolding				\$ 78,000.00	\$ 78,000.00	\$ 78,000.00
Phase #2 Architectural Fee						
General Conditions						
General Conditions				\$ 244,749.56	\$ 247,491.73	\$ 265,509.50
Overhead and Profit						
Overhead and Profit				\$ 367,124.33	\$ 371,237.60	\$ 398,264.25
Total				\$ 3,137,369.44	\$ 3,171,646.63	\$ 3,396,868.73

Zoning/EMA/PCOM Report

Shelby County Board Meeting 1-11-16

Zoning

10 Building Permits Issued in November

- 2 Mobile Homes
- 2 Accessory Buildings
- 5 Grain Bins
- 1 Residential Addition

Planning Commission recommended approval on December 15th.

- Petition for Special Exception
 - Effingham Equity
 - Section 14 of Richland Township
 - 1240 N St. Hwy 32
 - Ag with Special Exception for fertilizer storage

EMA

January is Ready to Resolve Preparedness Month.

Attended Central A&M Crisis Management Plan review January 3rd

911 Board meeting January 9th.

PCOM

Please Reference PCOM Report in Board Packet.

New CIPT Transportation Director hired by CEFS, Susan Love

CIPT beginning more outreach to local groups that would like them to speak about the service if anyone has a recommendation, please let us know.

December Building Permit Log

Permit #	Date	Name	Township	Parcel ID	Type	Est. Cost	Fee
16-077	12/2/2016	David Gregg	17; Clarksburg	0319-17-00-300-010	Grain Bin	N/A	N/F
16-078	12/5/2016	Tyler Yates	17; Rose	1812-17-00-300-025	Mobile Home	N/A	\$ 175.00
16-079	12/5/2016	Don and Rena Cain	01; Big Spring	0221-01-08-201-021	Res. Addition	N/A	\$ 125.00
16-080	12/5/2016	Renee Potter	09; Rural	1906-09-00-200-002	Grain Bin	N/A	N/F
16-081	12/8/2016	Richard Harley	13; Pickaway	1404-13-00-100-010	Grain Bin	N/A	N/F
16-082	12/12/2016	Richard Morse	03; Okaw	1208-03-00-100-003	Grain Bin	N/A	N/F
16-083	12/12/2016	Richard Morse	03; Okaw	1208-03-00-100-003	Grain Bin	N/A	N/F
16-084	12/16/2016	Probst Porkers	28; Ash Grove	0115-28-00-300-001	Mobile Home	N/A	\$ 175.00
16-085	12/20/2016	Thomas Moffett	22; Ash Grove	0115-22-00-100-009	Acc. Building	N/A	N/F
16-086	12/21/2016	Larry Lenz	30; Ash Grove	0115-30-00-200-001	Acc. Building	N/A	N/F

1/10/17

Purchasing Committee

Present were Joe Woodall Don Strohl
Lynn Williams Jim Aitken Gary Geyen

Lynn Williams made the motion to approve the bills
Joe Woodall seconded All voted aye

Joe Woodall made the motion to adjourn Jim Aitken
seconded the motion All voted aye

FILED

JAN 10 2017

Jessica Fox
SHELBY COUNTY CLERK

See Salary
Jan 10, 2017

Kay Kearney, Frank Mulholland, Bart Bennett

Claims were approved - Discussion on Sheriff
vacation payroll

FILED

JAN 10 2017

Jessica Fox
SHELBY COUNTY CLERK

Law Enforcement Committee

Meeting Minutes January 5, 2017

Meeting was called to order at 9:00 a.m. with the following Committee members present. Kay Kearney, Bob Simpson and Richard Hayden Dave Cruitt. Sheriff Koonce chaired the meeting and Undersheriff McCall served as secretary.

An update of the new 911 system merger was given. Sheriff Koonce reported the new radio equipment had been added to the Corp of Engineers tower near the Lake Dam to increase communications between Christian county and the far eastern part of Shelby County. This equipment was paid for by the 911 grant.

Undersheriff McCall gave a presentation about the new training for all Law Enforcement Officers, Corrections and Dispatch staff that is now required by the State of Illinois and the Federal Government. Training is to include but not limited to: Procedural Justice, Cultural Competency, Civil Rights, Procedural Justice and Constitutional use of Law Enforcement Authority. The classes will be provided at no cost by several Mobile Training units. However, the Overtime to send employees to the Mandatory schooling will not be. It is estimated an additional \$50,000.00 to \$60,000.00 in Overtime over the next three years will be spent training Sheriff's Office employees in required classes. This does not include incidental expenses like travel cost per diem meals and lodging.

Sheriff Koonce reported on the Sheriff's Office arrest and booking states for 2016.

Committee members reviewed and approved the Sheriff's Office expenditures for the preceding month.

Respectfully Submitted:

Rob McCall

Undersheriff

FILED
JAN 05 2017
Jessica Fox
SHELBY COUNTY CLERK

C.E.F.S. Economic Opportunity Corporation

"Community Action Agency"



1805 S. Banker Street, P.O. Box 928
Effingham, IL 62401-0928
PHONE: (217) 342-2193 ~ FAX: (217) 342-4701
EMAIL: cefs@cefseoc.org
WEBSITE: www.cefseoc.org

PAUL D. WHITE
Chief Executive Officer

F I L E D
DEC 15 2016

Jessica Fox
SHELBY COUNTY CLERK

November 30, 2016

TO: Jessica Fox
Shelby County Clerk
301 E. Main
PO Box 320
Shelbyville, IL 62565

FROM: Kevin Bushur
Chief Operations Officer
1805 S. Banker St.
Shelbyville, IL 62041

During the month of November, Mobility Manager, Nathan Nichols acquired contracts with Shelby Chamber of Commerce. He had a booth set up at the Dacey Trail Family Vendor and held a presentation at the Head Start Connection. Enclosed are copies of the Shelby County November PCOM report to share with your board members. Please contact Kevin Bushur, Chief Operations Officer, at 217-342-2193 ext. 117 or by e-mail at kbushur@cefseoc.org if there are any questions.

Kevin Bushur
Chief Operations Officer

Enclosures

EQUAL OPPORTUNITY EMPLOYER

C.E.F.S./Central Illinois Public Transit

Grant Recipient Monthly Monitoring Outcome Report

Shelby County

Hours of Service for Shelby County Transportation are 6:00 A.M. to 6:00 P.M.													
Monitoring Indexes	Jul-16	Aug-16	Sep-16	Oct-16	Nov-16	Dec-16	Jan-17	Feb-17	Mar-17	Apr-17	May-17	Jun-17	Total
Number of Days of Service	20	23	22	22									87
Number of Trips	1,455	2,089	2,155	2,390									8,089
Number of Vehicles	8	9	9	9									
Revenue Vehicle Hours	903	1,097	1,036	1,048									4,084
Revenue Vehicle Miles	11,835	14,478	13,221	13,091									52,625
DOAP Revenues													\$0
5311 Revenues													\$0
Contract Revenues			\$10,677	\$5,271									\$15,948
Fares	\$346	\$399	\$245	\$261									\$1,251
System Expenses	\$25,479	\$21,765	\$33,087	\$29,224									\$109,555
Net Revenues	-\$25,133	-\$21,366	-\$22,165	-\$23,692	\$0	\$0	\$0	\$0	\$0	\$0	\$0	\$0	-\$92,356
Ridership	90	153	163	170									576
Trip Denials	0	0	0	1									1
Trip Denied but Provided	0	0	0	0									0
Cost per Trip	\$17.51	\$10.42	\$15.35	\$12.23	\$0.00	\$0.00	\$0.00	\$0.00	\$0.00	\$0.00	\$0.00	\$0.00	\$13.54
Cost per Hour	\$28.22	\$19.84	\$31.94	\$27.89	\$0.00	\$0.00	\$0.00	\$0.00	\$0.00	\$0.00	\$0.00	\$0.00	\$26.83
Cost per Mile	\$2.15	\$1.50	\$2.50	\$2.23	\$0.00	\$0.00	\$0.00	\$0.00	\$0.00	\$0.00	\$0.00	\$0.00	\$2.08
Maintenance of Vehicles	3	3	7	3									16
Maintenance of Facilities	0	0	0	0									0
New Service Contracts	1	1	0	2									4
Overtime Hours													0
Complaints	0	0	0	0									0
Vehicle Accidents	0	0	0	0									0
Mobility Index Outcomes/Efforts	0.065	0.093	0.096	0.107	0.000	0.000	0.000	0.000	0.000	0.000	0.000	0.000	0.362
Annualized Mobility Index	0.781	0.951	1.019	1.085	0.868	0.723	0.620	0.543	0.482	0.434	0.395	0.362	
(Note - Annual Goal is .69)													
2010 Census Rural Population													
Shelby County	22,363												

FILED

DEC 15 2016

Denise Cox
SHELBY COUNTY CLERK

C.E.F.S./Central Illinois Public Transit
Grant Recipient Monthly Monitoring Outcome Report
Combined Report for Shelby County Transportation Project

Hours of Service for Transportation for All Counties are 6:00 A.M. to 6:00 P.M.

Monitoring Indexes	Jul-16	Aug-16	Sep-16	Oct-16	Nov-16	Dec-16	Jan-17	Feb-17	Mar-17	Apr-17	May-17	Jun-17	Total
Number of Days of Service-Shelby	20	23	22	22	0	0	0	0	0	0	0	0	87
Number of Trips	6,134	7,583	8,653	7,807	0	0	0	0	0	0	0	0	30,177
Number of Vehicles	33	31	31	31	0	0	0	0	0	0	0	0	16,143
Revenue Vehicle Hours	3,439	5,113	3,815	3,776	0	0	0	0	0	0	0	0	221,094
Revenue Vehicle Miles	50,828	57,842	56,340	56,084	0	0	0	0	0	0	0	0	\$0
DOAP Revenues	\$0	\$0	\$0	\$0	\$0	\$0	\$0	\$0	\$0	\$0	\$0	\$0	\$0
5311 Revenues	\$0	\$0	\$0	\$0	\$0	\$0	\$0	\$0	\$0	\$0	\$0	\$0	\$0
Contract Revenues	\$75	\$4,809	\$21,015	\$11,233	\$0	\$0	\$0	\$0	\$0	\$0	\$0	\$0	\$37,132
Fares	\$2,163	\$3,133	\$2,477	\$3,142	\$0	\$0	\$0	\$0	\$0	\$0	\$0	\$0	\$10,915
System Expenses	\$123,433	\$109,958	\$118,442	\$109,535	\$0	\$0	\$0	\$0	\$0	\$0	\$0	\$0	\$461,368
Net Revenues	-\$121,195	-\$102,016	-\$94,950	-\$95,160	\$0	\$0	\$0	\$0	\$0	\$0	\$0	\$0	-\$413,321
Ridership	565	641	662	651	0	0	0	0	0	0	0	0	2,519
Trip Denials	4	5	9	7	0	0	0	0	0	0	0	0	25
Trip Denied but Provided	0	0	0	0	0	0	0	0	0	0	0	0	0
Cost per Trip	\$20.12	\$14.50	\$13.69	\$14.03	\$0.00	\$0.00	\$0.00	\$0.00	\$0.00	\$0.00	\$0.00	\$0.00	\$15.29
Cost per Hour	\$35.89	\$21.51	\$31.05	\$29.01	\$0.00	\$0.00	\$0.00	\$0.00	\$0.00	\$0.00	\$0.00	\$0.00	\$28.58
Cost per Mile	\$2.43	\$1.90	\$2.10	\$1.95	\$0.00	\$0.00	\$0.00	\$0.00	\$0.00	\$0.00	\$0.00	\$0.00	\$2.09
Maintenance of Vehicles	14	13	24	12	0	0	0	0	0	0	0	0	63
Maintenance of Facilities	0	0	1	0	0	0	0	0	0	0	0	0	1
New Service Contracts	13	4	7	7	0	0	0	0	0	0	0	0	31
Overtime Hours	0	0	0	0	0	0	0	0	0	0	0	0	0
Complaints	0	0	0	0	0	0	0	0	0	0	0	0	0
Vehicle Accidents	0	0	0	0	0	0	0	0	0	0	0	0	0
Mobility Index Outcomes/Efforts	0.044	0.055	0.063	0.067	0.000	0.000	0.000	0.000	0.000	0.000	0.000	0.000	0.219
Annualized Mobility Index	0.553	0.596	0.648	0.656	0.525	0.437	0.375	0.328	0.291	0.262	0.238	0.219	
(Note - Annual Goal is .69)													
Quarterly Reporting			First			Second					Third		Fourth
Fare Box Recovery Ratio			Quarter			Quarter					Quarter		Quarter
Subsidy per D/R Trip			2.21%			2.87%					0.00%		0.00%
Avg. Miles per Trip			\$0.00			\$0.00					\$0.00		\$0.00
Subsidy per Mile			7.38			7.18					0.00		0.00
Revenue per Mile			\$0.00			\$0.00					\$0.00		\$0.00
			\$0.00			\$0.00					\$0.00		\$0.00

FILED

DEC 15 2016

10 Census Rural Population													
Shelby County	22,363												
Moultrie County	14,846												
Montgomery County	30,104												
Fayette County	22,140												
Christian County	34,800												
Clay County	13,815												
Total Population	138,068												

Jessica Fox

From: Reiser, Kathryn A [reiser@illinois.edu]
Sent: Wednesday, January 04, 2017 3:22 PM
To: shcoclerk@shelbycounty-il.com; 'Gary Gergen' (ggergeni@consolidated.net)
Subject: FW: □ 2016 Legislative Update Webinar

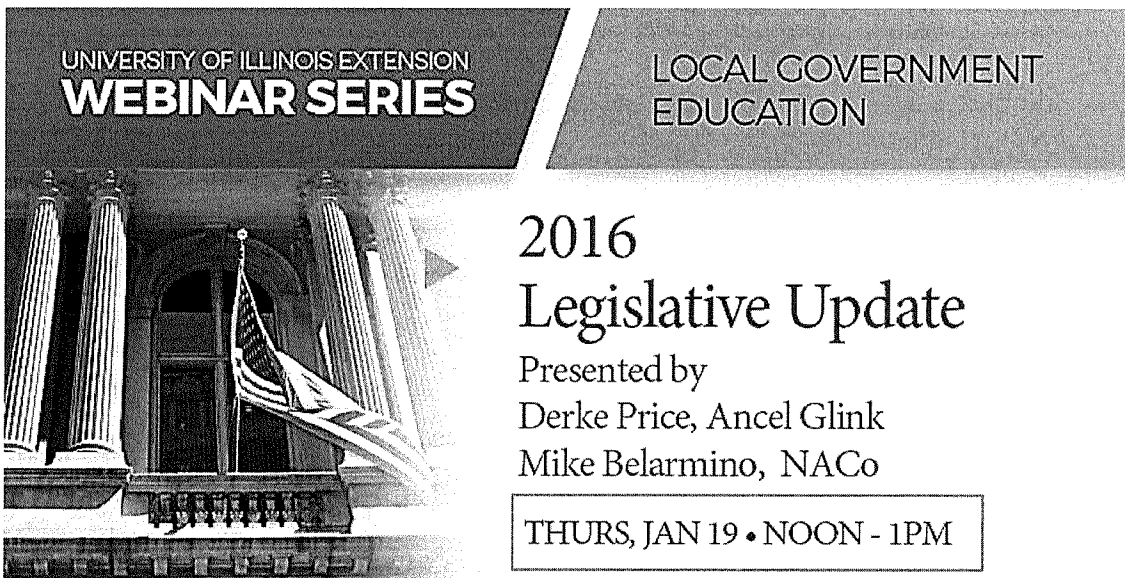
Jessica, please pass this along to your County Board members. Thank you.

Dear Shelby County Board member:

I thought you might be interested in this January 19 webinar, sponsored by University of Illinois Extension's Local Government Education program.

Please note that while the webinar is free, you'll need to reserve your spot via the link within the message.

[View this email in your browser](#)

A graphic for the University of Illinois Extension Webinar Series. It features a black and white photograph of a classical building with columns and an American flag. The text "UNIVERSITY OF ILLINOIS EXTENSION WEBINAR SERIES" is in the top left, and "LOCAL GOVERNMENT EDUCATION" is in the top right. The main title "2016 Legislative Update" is in the center, followed by "Presented by Derke Price, Ancel Glink Mike Belarmino, NACo". A box at the bottom right contains the date and time: "THURS, JAN 19 • NOON - 1PM".

UNIVERSITY OF ILLINOIS EXTENSION
WEBINAR SERIES

LOCAL GOVERNMENT
EDUCATION

**2016
Legislative Update**

Presented by
Derke Price, Ancel Glink
Mike Belarmino, NACo

THURS, JAN 19 • NOON - 1PM

Live Webinar

2016 Legislative Update

Thursday, January 19, 2017 | Noon - 1pm

Co-Presented By:

Derke Price, Equity Partner with Ancel Glink

Mike Belarmino, Associate Legislative Director for Finance and Intergovernmental Affairs,

REGISTER HERE

regarding state and federal legislative agendas that will affect local governments. Tune into the University of Illinois Extension webinar January 19, from noon to 1 p.m., for an update on State and Federal legislation affecting local government.

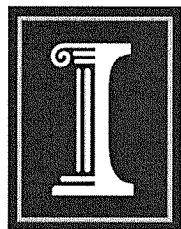
Derke Price, Equity Partner with Ancel Glink, will present an update of state legislative changes that will impact local government during the coming year. Mike Belarmino, Associate Legislative Director for Finance and Intergovernmental Affairs at the National Association of Counties (NACo), will discuss federal legislative changes.

University of Illinois Extension · U.S. Department of Agriculture · Local Extension Councils Cooperating | University of Illinois Extension provides equal opportunities in programs and employment.

There is no cost to attend the webinar; however, pre-registration is required online in order to attend, or contact Kathie Brown at brownlk@illinois.edu for more information.

Subscribe to all LGE Webinars

You can visit our [Local Government E-Institutes page](#) to view recordings of previous programs - topics include Best Practices in eGovernment, Illinois Budget Crisis, Impact on Local Government, and others.



UNIVERSITY OF ILLINOIS EXTENSION

University of Illinois College of Agricultural, Consumer and Environmental Sciences • United States Department of Agriculture • Local Extension Councils Cooperating. University of Illinois Extension provides equal opportunities in programs and employment. If you need a reasonable accommodation to participate in this program, please contact your local Extension office. Universidad de Illinois ofrece igualdad de oportunidades en programas y empleo. Si usted necesita un ajuste razonable para participar en este programa, por favor póngase en contacto con nuestra oficina.

Subscribe Here

Kathy Reiser

University of Illinois Extension

County Director serving Coles, Cumberland, Douglas, Moultrie and Shelby Counties

Main office: 707-A Windsor Road, Charleston, IL 61920

Phone: 217/345-7034

<http://web.extension.illinois.edu/ccdms/>

Shelby County

Monthly Balance Sheet

		<u>12/31/2016</u>
	ASSETS	
GENERAL	001-1000-00-00 CHECKING	\$9,908.50
GENERAL	001-1001-00-00 COUNTY PAYROLL CLEARING	\$26,576.85
GENERAL	001-1002-00-00 SECTION 105	\$10,000.00
GENERAL	001-1100-00-00 PETTY CASH	\$5,000.00
GENERAL	001-1101-00-00 PROBATION CASH	\$50.00
GENERAL	001-1300-00-00 MONEY MARKETS	\$2,296,786.86
GENERAL	001-1400-00-00 CERTIFICATE OF DEPOSITS	\$645,200.10
GENERAL	001-1999-00-00 DUE TO/DUE FROM GENERAL FUND	\$73,714.31
	Totals for Fund 001:	<u>\$3,067,236.62</u>
COUNTY HEALTH	002-1100-00-00 PETTY CASH	\$135.64
COUNTY HEALTH	002-1200-00-00 SAVINGS	\$40,073.01
COUNTY HEALTH	002-1300-00-00 MONEY MARKETS	\$24,823.61
	Totals for Fund 002:	<u>\$65,032.26</u>
ANIMAL CONTROL	003-1300-00-00 MONEY MARKETS	\$31,132.49
ANIMAL CONTROL	003-1400-00-00 CERTIFICATE OF DEPOSITS	\$37,994.97
	Totals for Fund 003:	<u>\$69,127.46</u>
AMBULANCE	004-1200-00-00 SAVINGS	\$104,251.39
AMBULANCE	004-1400-00-00 CERTIFICATE OF DEPOSITS	\$23,648.57
	Totals for Fund 004:	<u>\$127,899.96</u>
MENTAL HEALTH	005-1300-00-00 MONEY MARKETS	\$1,428,265.64
MENTAL HEALTH	005-1400-00-00 CERTIFICATE OF DEPOSITS	\$153,740.19
	Totals for Fund 005:	<u>\$1,582,005.83</u>
IMRF	006-1200-00-00 SAVINGS	\$909,350.36
IMRF	006-1999-00-00 DUE TO/DUE FROM GENERAL FUND	(\$48,672.03)
	Totals for Fund 006:	<u>\$860,678.33</u>
SOCIAL SECURITY	007-1200-00-00 SAVINGS	\$298,826.49
	Totals for Fund 007:	<u>\$298,826.49</u>
INDEMNITY	008-1200-00-00 SAVINGS	\$52,485.36
INDEMNITY	008-1400-00-00 CERTIFICATE OF DEPOSITS	\$54,807.18
	Totals for Fund 008:	<u>\$107,292.54</u>
COURT SECURITY	010-1200-00-00 SAVINGS	\$842.39
COURT SECURITY	010-1999-00-00 DUE TO/DUE FROM GENERAL FUND	(\$24,448.21)
	Totals for Fund 010:	<u>(\$23,605.82)</u>
COUNTY BRIDGE	011-1300-00-00 MONEY MARKETS	\$197,410.45
	Totals for Fund 011:	<u>\$197,410.45</u>
COUNTY HIGHWAY	012-1200-00-00 SAVINGS	\$229,024.44
	Totals for Fund 012:	<u>\$229,024.44</u>

Shelby County Monthly Balance Sheet

		<u>12/31/2016</u>
FASM	013-1300-00-00 MONEY MARKETS	\$46,941.87
	Totals for Fund 013:	<u>\$46,941.87</u>
COUNTY MFT	014-1300-00-00 MONEY MARKETS	\$521,337.81
	Totals for Fund 014:	<u>\$521,337.81</u>
TOURISM	015-1200-00-00 SAVINGS	\$2,266.81
	Totals for Fund 015:	<u>\$2,266.81</u>
PROBATION	016-1200-00-00 SAVINGS	\$255,171.82
PROBATION	016-1400-00-00 CERTIFICATE OF DEPOSITS	\$98,187.78
PROBATION	016-1999-00-00 DUE TO/DUE FROM GENERAL FUND	(\$91.50)
	Totals for Fund 016:	<u>\$353,268.10</u>
ASSIST COURT	017-1200-00-00 SAVINGS	\$3,716.54
	Totals for Fund 017:	<u>\$3,716.54</u>
LAW LIBRARY	018-1200-00-00 SAVINGS	\$304.20
LAW LIBRARY	018-1999-00-00 DUE TO/DUE FROM GENERAL FUND	(\$300.00)
	Totals for Fund 018:	<u>\$4.20</u>
AUTOMATION	019-1200-00-00 SAVINGS	\$48,893.96
	Totals for Fund 019:	<u>\$48,893.96</u>
RECORDING	020-1200-00-00 SAVINGS	\$157,630.48
	Totals for Fund 020:	<u>\$157,630.48</u>
DRUG TRAFFIC PREVENTION	021-1200-00-00 SAVINGS	\$1,988.41
	Totals for Fund 021:	<u>\$1,988.41</u>
AIRPORT	022-1000-00-00 CHECKING	\$359.19
AIRPORT	022-1300-00-00 MONEY MARKETS	\$14,680.57
AIRPORT	022-1400-00-00 CERTIFICATE OF DEPOSITS	\$44,457.87
	Totals for Fund 022:	<u>\$59,497.63</u>
CEFS	023-1200-00-00 SAVINGS	\$1,875.69
	Totals for Fund 023:	<u>\$1,875.69</u>
HOME NURSING	024-1300-00-00 MONEY MARKETS	\$829,576.41
HOME NURSING	024-1400-00-00 CERTIFICATE OF DEPOSITS	\$243,261.74
HOME NURSING	024-1999-00-00 DUE TO/DUE FROM GENERAL FUND	(\$141.86)
	Totals for Fund 024:	<u>\$1,072,696.29</u>
WIC	025-1000-00-00 CHECKING	\$46,217.56
WIC	025-1999-00-00 DUE TO/DUE FROM GENERAL FUND	(\$60.79)
	Totals for Fund 025:	<u>\$46,156.77</u>
LOCAL BRIDGE	026-1300-00-00 MONEY MARKETS	\$139,669.35
	Totals for Fund 026:	<u>\$139,669.35</u>

Shelby County Monthly Balance Sheet

		<u>12/31/2016</u>
TOWNSHIP BRIDGE	027-1200-00-00 SAVINGS	\$35,869.96
	Totals for Fund 027:	<u>\$35,869.96</u>
TOWNSHIP CONTRUCTION	028-1000-00-00 CHECKING	\$300.23
	Totals for Fund 028:	<u>\$300.23</u>
TOWNSHIP MFT	029-1300-00-00 MONEY MARKETS	\$1,303,855.51
	Totals for Fund 029:	<u>\$1,303,855.51</u>
ESTATE TAX	031-1200-00-00 SAVINGS	\$1,150.08
	Totals for Fund 031:	<u>\$1,150.08</u>
MINOR UNKNOWN HEIRS	032-1200-00-00 SAVINGS	\$46,051.79
	Totals for Fund 032:	<u>\$46,051.79</u>
PROBATION DRUG TESTING	037-1200-00-00 SAVINGS	\$8,225.04
	Totals for Fund 037:	<u>\$8,225.04</u>
DRAINAGE	039-1000-00-00 CHECKING	\$9,881.60
DRAINAGE	039-1200-00-00 SAVINGS	\$313,426.45
DRAINAGE	039-1300-00-00 MONEY MARKETS	\$40,143.75
	Totals for Fund 039:	<u>\$363,451.80</u>
DOCUMENT STORAGE	040-1200-00-00 SAVINGS	\$57,020.98
	Totals for Fund 040:	<u>\$57,020.98</u>
MISC COUNTY HEALTH	043-1200-00-00 SAVINGS	\$114,020.09
MISC COUNTY HEALTH	043-1400-00-00 CERTIFICATE OF DEPOSITS	\$82,783.25
	Totals for Fund 043:	<u>\$196,803.34</u>
LITIGATION	044-1200-00-00 SAVINGS	\$5,616.26
LITIGATION	044-1300-00-00 MONEY MARKETS	\$17,733.68
	Totals for Fund 044:	<u>\$23,349.94</u>
REVOLVING LOAN	045-1200-00-00 SAVINGS	\$304,683.26
REVOLVING LOAN	045-1400-00-00 CERTIFICATE OF DEPOSITS	\$209,470.55
	Totals for Fund 045:	<u>\$514,153.81</u>
VICTIM IMPACT PANEL	046-1200-00-00 SAVINGS	\$15,406.58
	Totals for Fund 046:	<u>\$15,406.58</u>
STATE'S ATTORNEY FORFEITE	047-1200-00-00 SAVINGS	\$1,126.54
	Totals for Fund 047:	<u>\$1,126.54</u>
RESCUE SQUAD DIVE TEAM	050-1200-00-00 SAVINGS	\$14,991.96
	Totals for Fund 050:	<u>\$14,991.96</u>
DUI EQUIPMENT	051-1200-00-00 SAVINGS	\$26,329.49
	Totals for Fund 051:	<u>\$26,329.49</u>

44B

Shelby County

Monthly Balance Sheet

		12/31/2016
GIS	052-1200-00-00 SAVINGS	\$405,587.34
	Totals for Fund 052:	\$405,587.34
CAPITAL IMPROVEMENT	054-1300-00-00 MONEY MARKETS	\$389,734.20
	Totals for Fund 054:	\$389,734.20
PET POPULATION	055-1000-00-00 CHECKING	\$22,736.44
	Totals for Fund 055:	\$22,736.44
EMA SPECIAL	056-1300-00-00 MONEY MARKETS	\$16,819.70
	Totals for Fund 056:	\$16,819.70
STATE'S ATTORNEY AUTOMA1	057-1200-00-00 SAVINGS	\$3,672.03
	Totals for Fund 057:	\$3,672.03
DRUG COURT	058-1200-00-00 SAVINGS	\$10,596.48
	Totals for Fund 058:	\$10,596.48
TAX SALE AUTOMATION	060-1200-00-00 SAVINGS	\$4,205.54
	Totals for Fund 060:	\$4,205.54
MISC STATE GRANT PROGRA	061-1300-00-00 MONEY MARKETS	\$27.59
	Totals for Fund 061:	\$27.59
RESCUE SQUAD	062-1200-00-00 SAVINGS	\$4,256.23
	Totals for Fund 062:	\$4,256.23
	Total	\$12,502,595.07
	Total ASSETS	\$12,502,595.07
	LIABILITIES AND FUND BALANCE	
	LIABILITIES	
GENERAL	001-2002-00-00 PAYROLL CLEARING	\$92,537.78
	Totals for Fund 001:	(\$92,537.78)
	TOTAL LIABILITIES	\$92,537.78
	TOTAL LIABILITIES AND FUND BALANCE	\$92,537.78

Run date: 01/03/2017 @ 08:36

County Collector

Select...: SXXX-XXXX.XX-XXX

Bus date: 01/03/2017

Balance Sheet

GLBALSH.L10 Page 1

100

Period ending 12/31/2016

Description	Balance
100-1000.00-001 SCSB	1,013.94
100-1000.00-002 BuseyBank	10,000.02
100-1000.00-017 National Bank-Pana	1,060.30
100-1000.00-019 Illinois National Bank	968.30
100-1000.00-030 Busey-Trustee Payment Acct	807.01
100-1200.00-003 Assumption	238.07
100-1200.00-005 Community Banks	230.53
100-1200.00-010 SCSB-Strasburg	314.10
100-1200.00-013 First Federal	190.76
100-1200.00-015 BuseyBank-RE Tax Trust	1,394.51
100-1300.00-001 SCSB	16,861.53
100-1300.00-002 BuseyBank	35,334.58
100-1300.00-004 Ayars Bank	855.48
100-1300.00-006 SCSB-Findlay	268.75
100-1300.00-007 First National of Pana	327.31
100-1300.00-008 Peoples Bank & Trust	455.10
100-1300.00-009 First National Bank-Stewardson	313.90
100-1300.00-011 SCSB-Windsor	270.09
100-1300.00-012 Dewitt Savings Bank	245.49
100-1300.00-016 Sigel Community Bank	308.61
100-1300.00-018 SCSB-Moweaqua	308.63
100-1300.00-019 The Illinois Funds	92,158.94

Total Assets	163,925.95
	=====
Excess Revenue over (under) Expenditures	.00

Total Net Assets	.00

Total Liabilities and Net Assets	.00
	=====

44D